

CARDS SEVEN DEPARTURE

ST. LOUIS/SPIRIT OF ST. LOUIS (STLS)

SL-5400 (FAA)

ST. LOUIS, MISSOURI

ATIS
134.8
SPIRIT TOWER*
124.75 257.2
GND CON
121.7
CLNC DEL
133.1

BRADFORD
114.7 BDF
Chan 94
N41°09.58'-W89°35.27'
L-27, H-5

TAKE-OFF MINIMUMS

Rwy 8L, 26R: Standard.

Rwy 8R: 300-1½ or standard with minimum climb of 285' per NM to 900'.

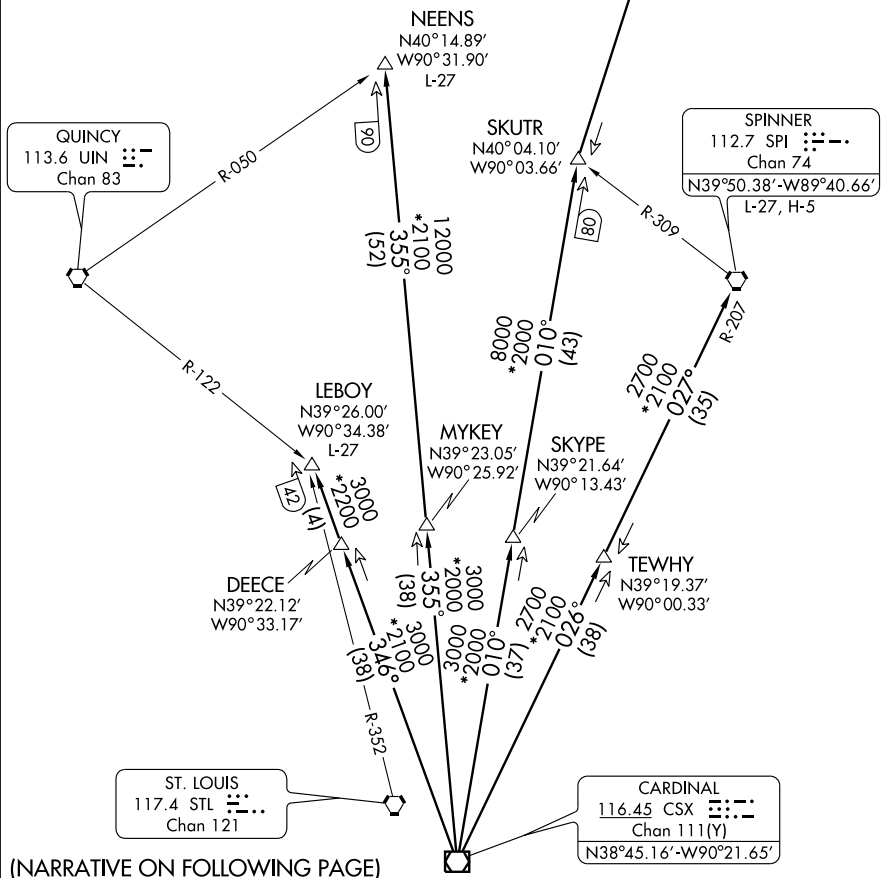
Rwy 26L: 400-1¾ or standard with minimum climb of 258' per NM to 900'.

NOTE: DME and RADAR required.

(NOTES CONTINUED ON FOLLOWING PAGE)

NC-3, 22 OCT 2009 to 19 NOV 2009

NC-3, 22 OCT 2009 to 19 NOV 2009



(NARRATIVE ON FOLLOWING PAGE)

NOTE: Chart not to scale.

CARDS SEVEN DEPARTURE