

TIFTON, GEORGIA

AL-5398 (FAA)

VOR or GPS RWY 28

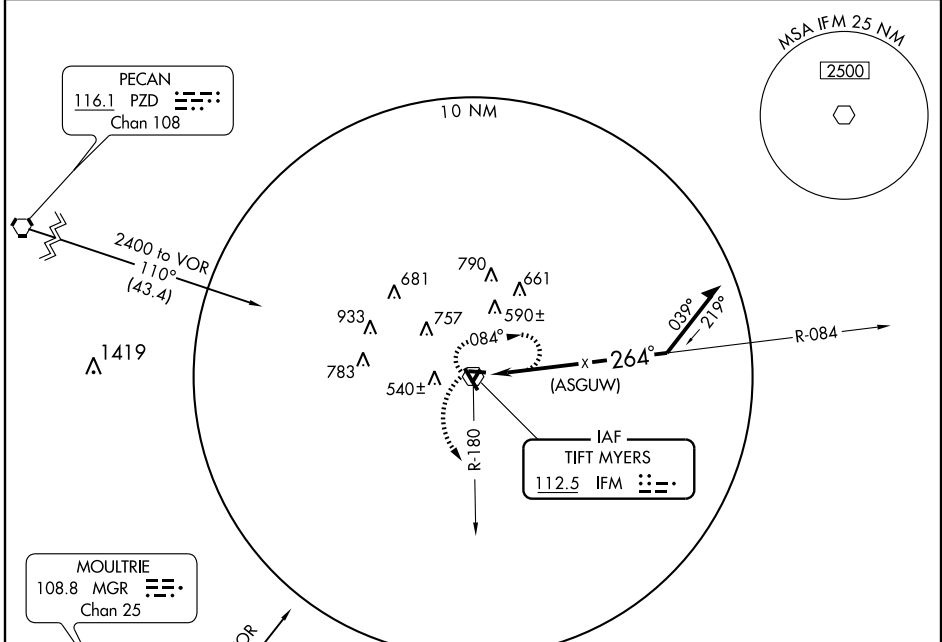
TIFTON/HENRY TIFT MYERS (TMA)

VOR IFM 112.5	APP CRS 264°	Rwy Idg 3805
		TDZE 350
		Apt Elev 355

NA S-28 minimums NA at night.

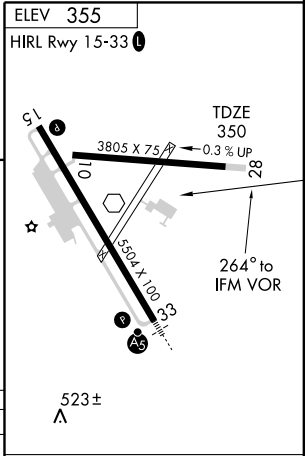
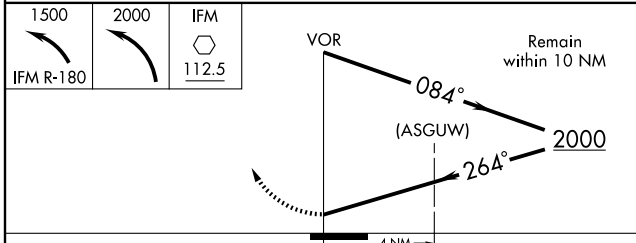
MISSED APPROACH: Climbing left turn to 1500 via IFM R-180, then climbing left turn to 2000 direct IFM VOR and hold.

AWOS-3 118.525	VALDOSTA APP CON ★ 126.6 285.6	UNICOM 122.7 (CTAF)
--------------------------	--	-------------------------------



SE-4, 22 OCT 2009 to 19 NOV 2009

SE-4, 22 OCT 2009 to 19 NOV 2009



CATEGORY	A	B	C	D
S-28	840-1	490 (500-1)	840-1½ 490 (500-1½)	840-1½ 490 (500-1½)
CIRCLING	900-1	545 (600-1)	920-1½ 565 (600-1½)	1060-2¼ 705 (800-2¼)

Knots	60	90	120	150	180
Min:Sec					

TIFTON, GEORGIA
Amdt 9C 07130

31° 26' N-83° 29' W

TIFTON/HENRY TIFT MYERS (TMA) VOR or GPS RWY 28