

TIFTON, GEORGIA

AL-5398 (FAA)

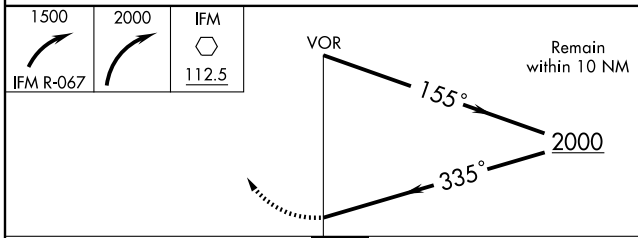
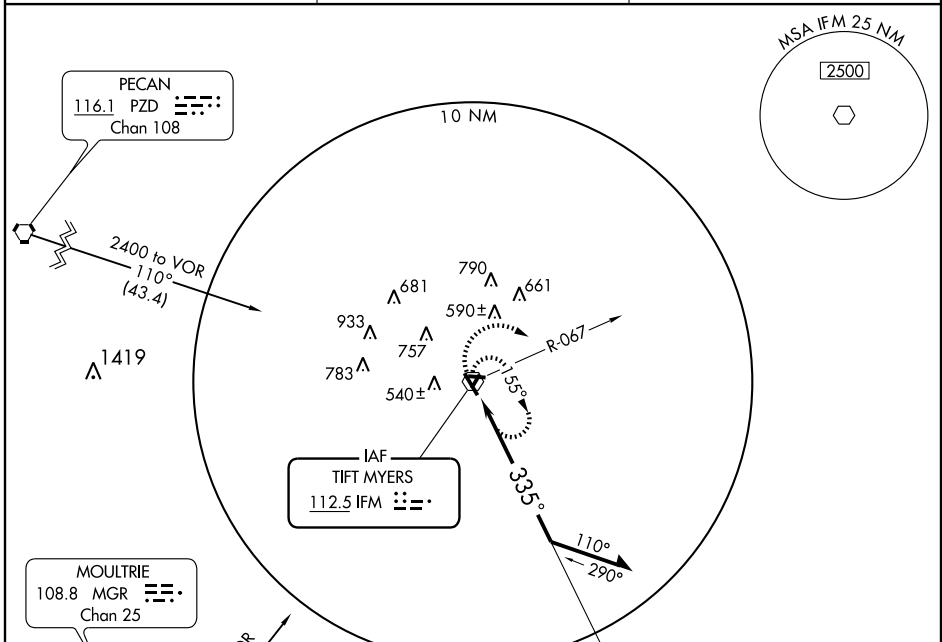
# VOR RWY 33

TIFTON/HENRY TIFT MYERS (TMA)

VOR IFM <b>112.5</b>	APP CRS <b>335°</b>	Rwy Idg <b>5504</b>
		TDZE <b>354</b>
		Apt Elev <b>355</b>

<p><b>▼</b> For inoperative MALS, increase S-33 Cat A/B visibility to 1.</p> <p><b>▲</b> NA</p>	<p><b>MALS</b></p>	<p><b>MISSED APPROACH:</b> Climbing right turn to 1500 via IFM R-067, then climbing right turn to 2000 direct IFM VOR and hold.</p>
---	--------------------	---

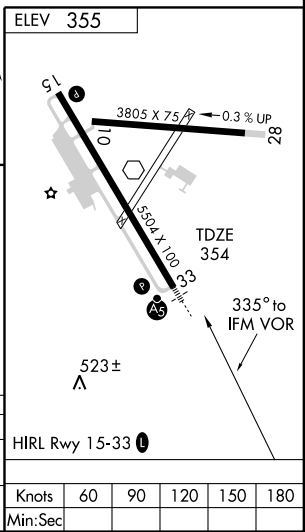
<p>AWOS-3 <b>118.525</b></p>	<p>VALDOSTA APP CON ★ <b>126.6 285.6</b></p>	<p>UNICOM <b>122.7 (CTAF) 0</b></p>
----------------------------------	--	---



1500	2000	IFM	
IFM R-067		112.5	

CATEGORY	A	B	C	D
S-33	840-3/4 486 (500-3/4)			840-1 486 (500-1)
CIRCLING	900-1	545 (600-1)	920-1 1/2 565 (600-1 1/2)	1060-2 1/4 705 (800-2 1/4)



SE-4, 22 OCT 2009 to 19 NOV 2009

SE-4, 22 OCT 2009 to 19 NOV 2009

TIFTON, GEORGIA  
Amdt 11B 07130

31° 26' N-83° 29' W

# TIFTON/HENRY TIFT MYERS (TMA) VOR RWY 33