

TIFTON, GEORGIA

AL-5398 (FAA)

NDB or GPS RWY 33

TIFTON/HENRY TIFT MYERS (TMA)

NDB TM 409	APP CRS 331°	Rwy ldg 5504
		TDZE 354
		Apt Elev 355

NA For inoperative MALSR, increase S-33 Cat A/B visibility to 1.

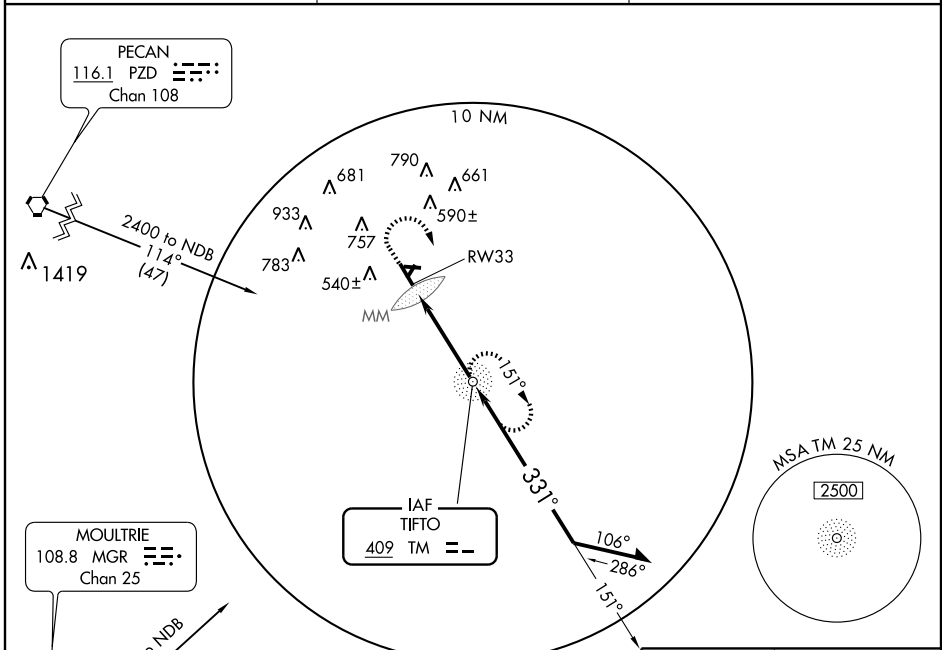


MISSED APPROACH: Climb to 1300 then climbing right turn to 2200 direct to TM NDB and hold.

AWOS-3
118.525

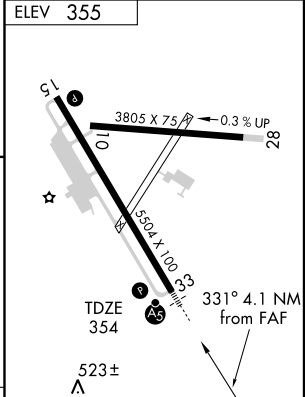
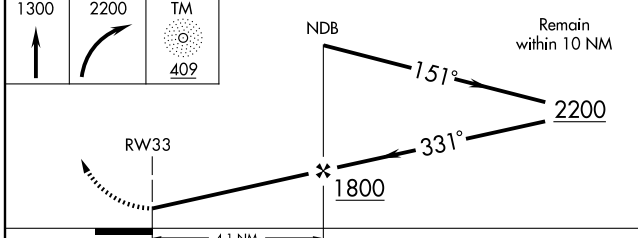
VALDOSTA APP CON ★
126.6 285.6

UNICOM
122.7 (CTAF) 0



SE-4, 22 OCT 2009 to 19 NOV 2009

SE-4, 22 OCT 2009 to 19 NOV 2009



CATEGORY	A	B	C	D
S-33	840-3/4	486 (500-3/4)		840-1 1/4 486 (500-1 1/4)
CIRCLING	900-1	545 (600-1)	920-1 1/2 565 (600-1 1/2)	1060-2 1/4 705 (800-2 1/4)

HIRL Rwy 15-33 0					
FAF to MAP 4.1 NM					
Knots	60	90	120	150	180
Min:Sec	4:06	2:44	2:03	1:38	1:22

TIFTON, GEORGIA
Orig-A 07130

31° 26' N-83° 29' W

TIFTON/HENRY TIFT MYERS (TMA)

NDB or GPS RWY 33