

TIFTON, GEORGIA

AL-5398 (FAA)

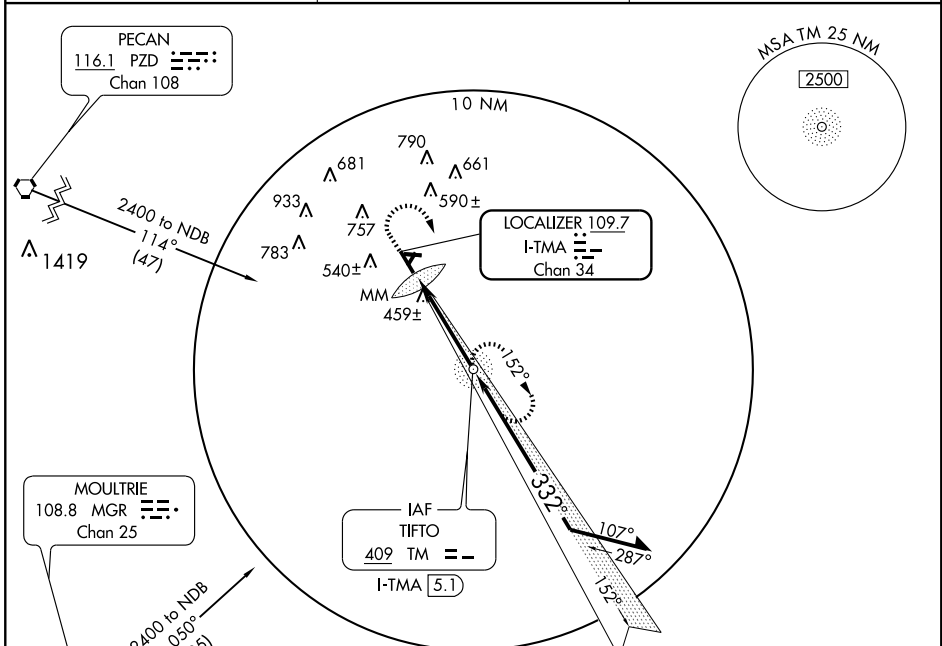
LOC/DME I-TMA 109.7 Chan 34	APP CRS 332°	Rwy Idg 5504 TDZE 354 Apt Elev 355
---	------------------------	---

ILS RWY 33

TIFTON/HENRY TIFT MYERS (TMA)

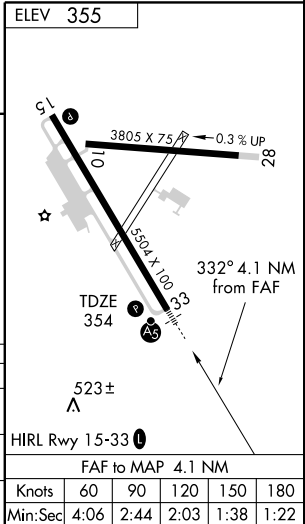
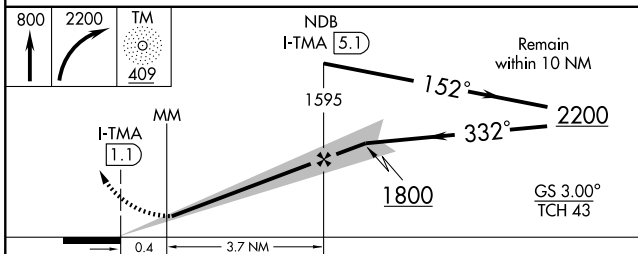
NA MALS	MISSED APPROACH: Climb to 800 then climbing right turn to 2200 direct TM NDB and hold.
------------	--

AWOS-3 118.525	VALDOSTA APP CON * 126.6 285.6	UNICOM 122.7 (CTAF)
--------------------------	--	-------------------------------



SE-4, 22 OCT 2009 to 19 NOV 2009

SE-4, 22 OCT 2009 to 19 NOV 2009



CATEGORY	A	B	C	D
S-ILS 33	554-1/2 200 (200-1/2)			
S-LOC 33	720-1/2 366 (400-1/2)		720-3/4 366 (400-3/4)	
CIRCLING	900-1 545 (600-1)		920-1 1060-2 705 (800-2)	

TIFTON, GEORGIA
Orig-C 08213

31° 26' N-83° 29' W

TIFTON/HENRY TIFT MYERS (TMA) ILS RWY 33

Knots	60	90	120	150	180
Min:Sec	4:06	2:44	2:03	1:38	1:22