

KENT, OHIO

AL-5397 (FAA)

WAAS CH 65701 W19A	APP CRS 196°	Rwy Idg 4000 TDZE 1134 Apt Elev 1134
---------------------------------	------------------------	---

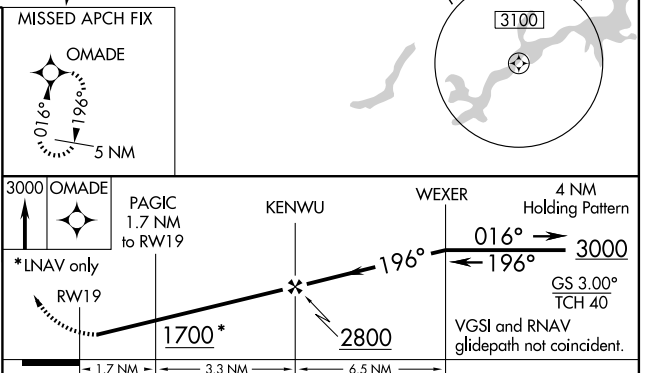
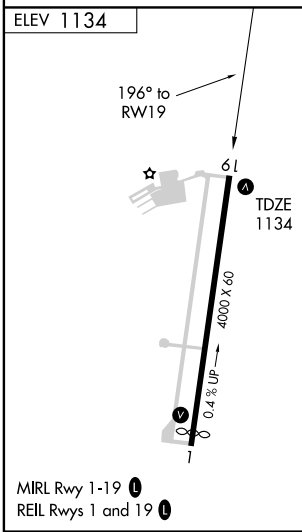
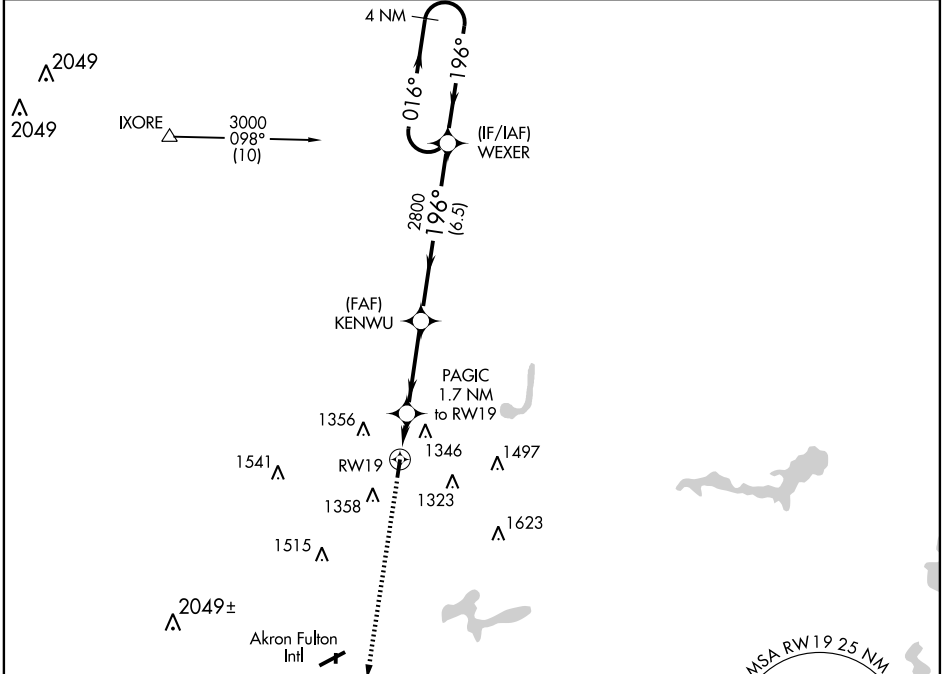
RNAV (GPS) RWY 19

KENT STATE UNIVERSITY (1G3)

NA DME/DME RNP-0.3 NA. Use Akron Fulton Intl altimeter setting; if not received use Akron-Canton Rgnl altimeter setting, and increase all DAs/MDAs 20 feet. Visibility reduction by helicopters NA. Baro-VNAV NA.

MISSED APPROACH: Climb to 3000 direct OMADE and hold.

AKRON-CANTON APP CON * 118.6 371.875	CLNC DEL 125.65	UNICOM 122.725 (CTAF)	122.9
--	---------------------------	---------------------------------	--------------



CATEGORY	A	B	C	D
LPV DA	1443-1 309 (400-1)			NA
LNAV MDA	1580-1	446 (500-1)	1580-1¼ 446 (500-1¼)	NA
CIRCLING	1760-1	626 (700-1)	1760-1¾ 626 (700-1¾)	NA

KENT, OHIO
Amdt 1A 09183

41°09'N - 81°25'W

RNAV (GPS) RWY 19

EC-2, 22 OCT 2009 to 19 NOV 2009

EC-2, 22 OCT 2009 to 19 NOV 2009