

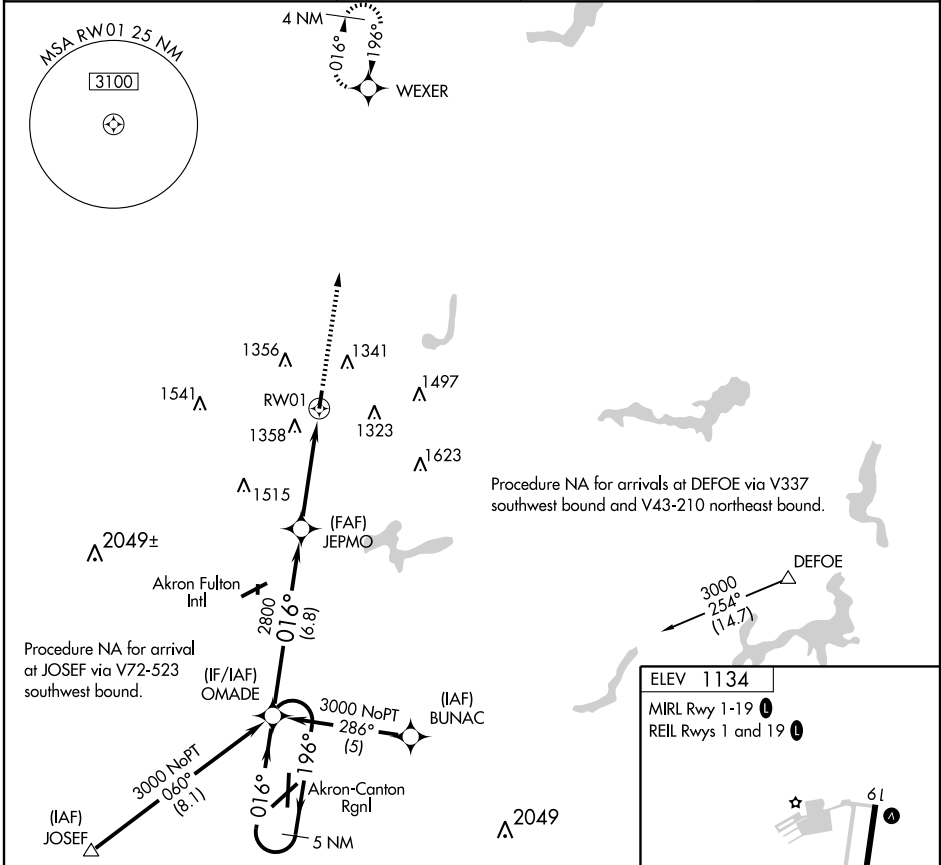
RNAV (GPS) RWY 1

KENT STATE UNIVERSITY (1G3)

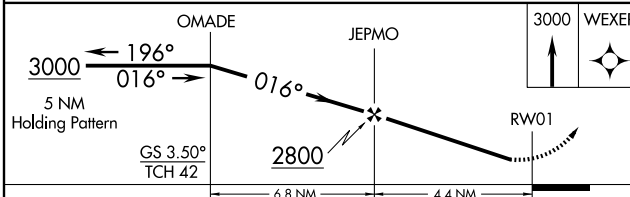
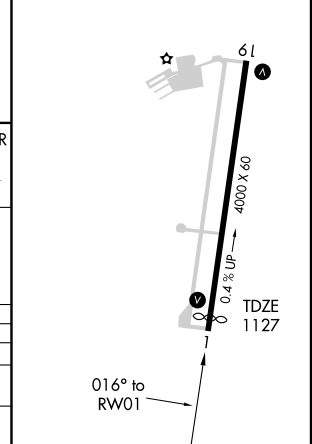
WAAS CH 61001 W01A	APP CRS 016°	Rwy Idg TDZE 1127 Apt Elev 1134
--	------------------------	---

NA DME/DME RNP-0.3 NA. Use Akron Fulton Intl altimeter setting; if not received use Akron-Canton Rgnl altimeter setting and increase all DAs/MDAs 20 feet. Visibility reduction by helicopters NA. Baro-VNAV NA. MISSED APPROACH: Climb to 3000 direct WEXER and hold.

AKRON-CANTON APP CON *	CLNC DEL	UNICOM	
118.6 371.875	125.65	122.725 (CTAF)	122.9



ELEV 1134
MIRL Rwy 1-19
REIL Rwys 1 and 19



CATEGORY	A	B	C	D
LPV DA	1497-1¼	370 (400-1¼)		NA
LNVA MDA	1660-1	533 (600-1)	1660-1½ 533 (600-1½)	NA
CIRCLING	1760-1¼	626 (700-1¼)	1760-1¾ 626 (700-1¾)	NA

EC-2, 22 OCT 2009 to 19 NOV 2009

EC-2, 22 OCT 2009 to 19 NOV 2009