

KENT, OHIO

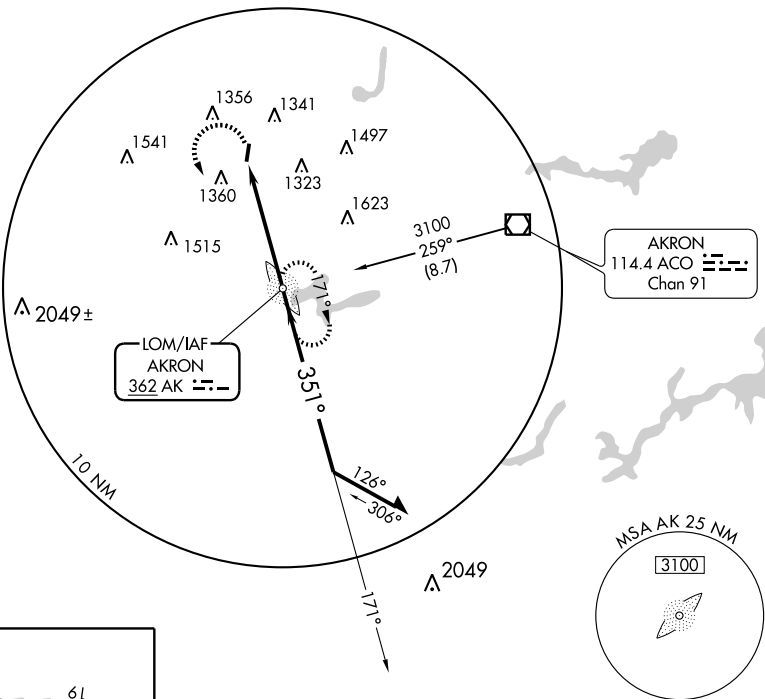
AL-5397 (FAA)

NDB RWY 1

KENT STATE UNIVERSITY (1G3)

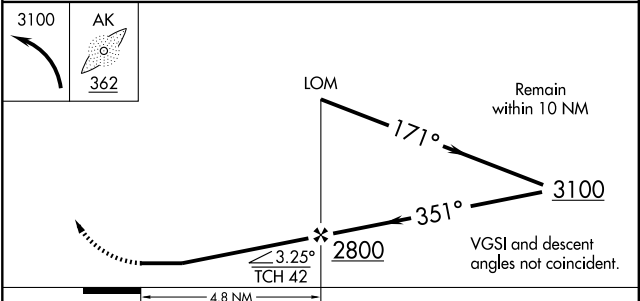
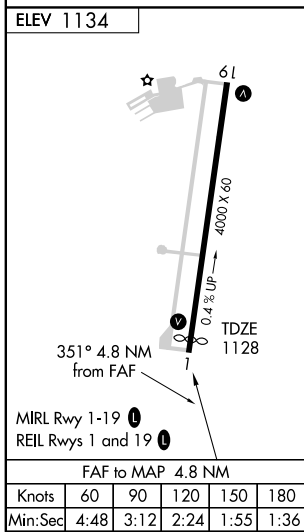
LOM AK 362	APP CRS 351°	Rwy Idg 3950
		TDZE 1128
		Apt Elev 1134

<p>▲ NA Use Akron-Canton altimeter setting.</p>		<p>MISSED APPROACH: Climbing left turn to 3100 direct AK LOM and hold.</p>	
<p>AKRON-CANTON APP CON ★ 118.6 371.875</p>	<p>CLNC DEL 125.65</p>	<p>UNICOM 122.725 (CTAF)</p>	<p>122.9</p>



EC-2, 22 OCT 2009 to 19 NOV 2009

EC-2, 22 OCT 2009 to 19 NOV 2009



CATEGORY	A	B	C	D
S-1	1760-1	632 (700-1)	1760-1¾ 632 (700-1¾)	NA
CIRCLING	1760-1	626 (700-1)	1760-1¾ 626 (700-1¾)	NA

KENT, OHIO
Amdt 12 09183

41°09'N - 81°25'W

KENT STATE UNIVERSITY (1G3)
NDB RWY 1