

RENTON, WASHINGTON

AL-5396 (FAA)

RNAV (GPS) Z RWY 16

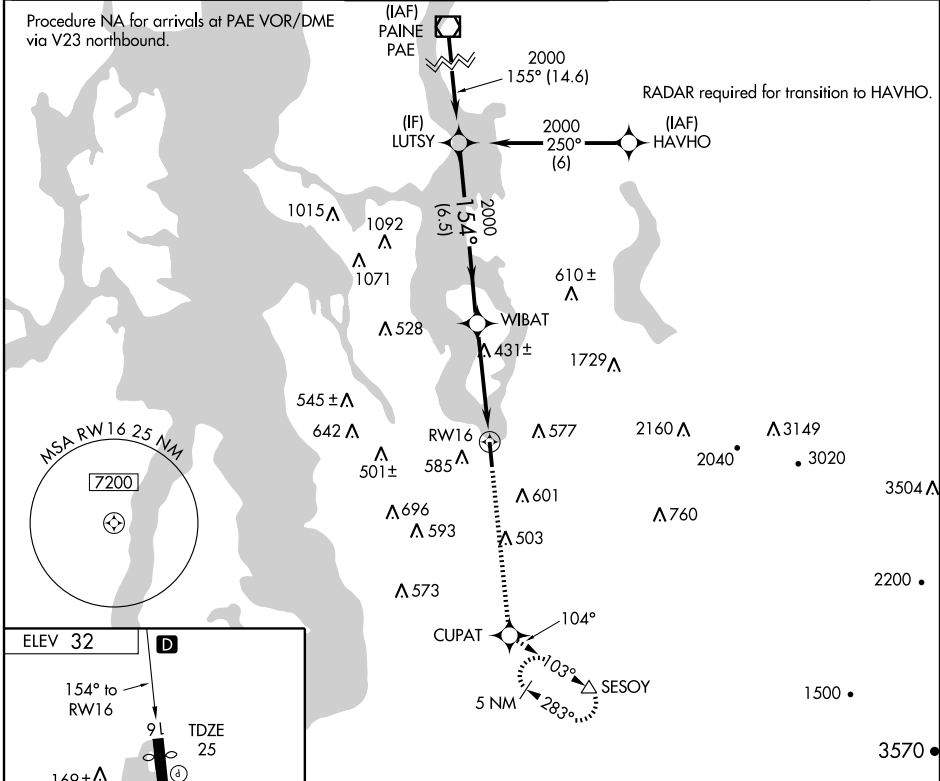
RENTON MUNI (RNT)

WAAS CH 93610 W15A	APP CRS 154°	Rwy Idg 5082 TDZE 25 Apt Elev 32
--	------------------------	---

▽ DME/DME RNP-0.3 NA. Circling NA west of Rwy 16-34.
▲ When local altimeter setting not received, use Seattle-Tacoma Intl altimeter setting.
 Circling requires descent on glidepath to CMDA.

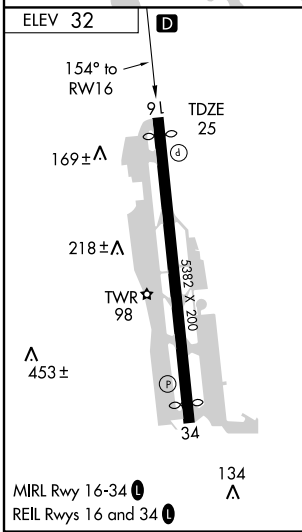
MISSED APPROACH: Climb to 5000 direct CUPAT and via 104° track to SESOY and hold, continue climb-in-hold to 5000.

ATIS 126.95	SEATTLE APP CON 119.2 284.7	RENTON TOWER* 124.7 (CTAF) 0 256.9	GND CON 121.6 256.9	UNICOM 122.95
-----------------------	---------------------------------------	--	-------------------------------	-------------------------



NW-1, 22 OCT 2009 to 19 NOV 2009

NW-1, 22 OCT 2009 to 19 NOV 2009



VGSI and RNAV glidepath not coincident.

	5000	CUPAT	104° track	SESOY
	↑	⬠	⬠	△

Procedure Turn NA

GS 4.20°
TCH 50

6.5 NM 4.2 NM

CATEGORY	A	B	C	D
LPV DA	538-1¼	513 (600-1¼)		NA
CIRCLING	880-1¼	848 (900-1¼)		NA

RENTON, WASHINGTON
Orig 09239

47°30'N-122°13'W

RNAV (GPS) Z RWY 16