

ONEONTA, NEW YORK

AL-5395 (FAA)

VOR/DME RKA 112.6 Chan 73	APP CRS 078°	Rwy Idg 4200 TDZE 1763 Apt Elev 1763
-----------------------------------------------	------------------------	-----------------------------------------------------------------

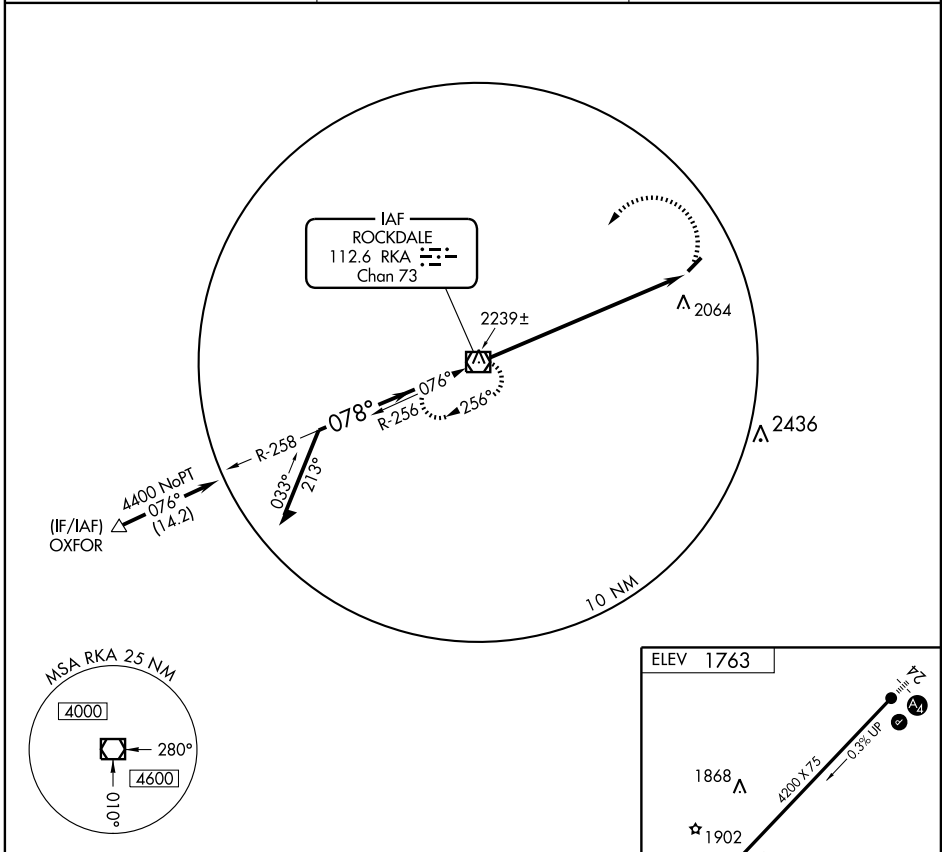
VOR RWY 6

ONEONTA MUNI (N66)

⚠ When local altimeter setting not received, use Binghamton altimeter setting and increase all MDA 140 feet, and S-6 Cat B and Circling visibility Cat B ¼ mile. Visibility reduction by helicopters NA.

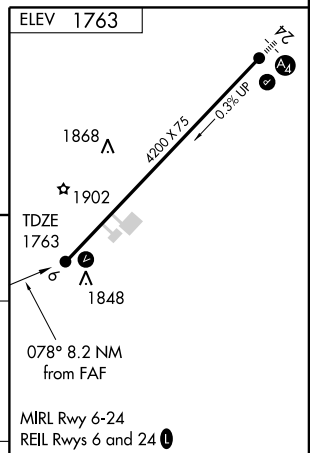
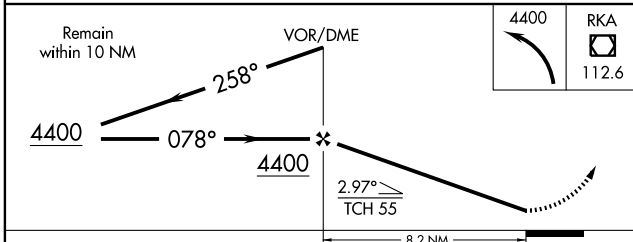
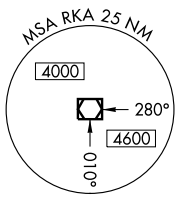
⚠ NA MISSED APPROACH: Climbing left turn to 4400 direct RKA VOR/DME and hold.

AWOS-3 119.575	BOSTON CENTER 133.25 279.5	UNICOM 122.8 (CTAF) 0
--------------------------	--------------------------------------	---------------------------------



NE-2, 22 OCT 2009 to 19 NOV 2009

NE-2, 22 OCT 2009 to 19 NOV 2009



CATEGORY	A	B	C	D	FAF to MAP 8.2 NM					
S-6	2440-1	677 (700-1)		NA	Knots	60	90	120	150	180
CIRCLING	2440-1	677 (700-1)		NA	Min:Sec	8:12	5:28	4:06	3:17	2:44

ONEONTA, NEW YORK
Amdt 4B 08269

42°31'N - 75°04'W

ONEONTA MUNI (N66)
VOR RWY 6