

# RNAV (GPS) RWY 6

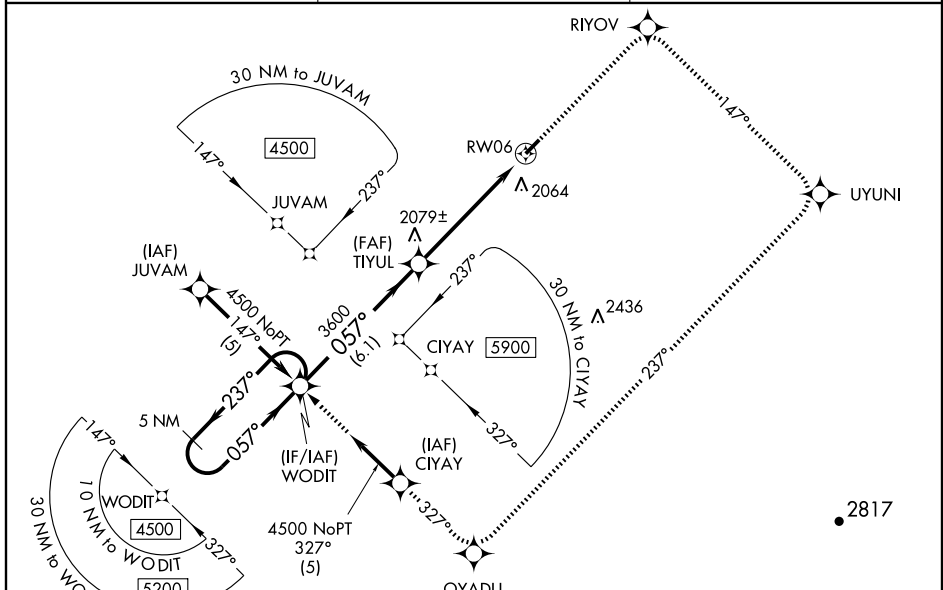
ONEONTA MUNI (N66)

WAAS CH <b>86309</b> W06A	APP CRS <b>057°</b>	Rwy Idg TDZE <b>1763</b> Apt Elev <b>1763</b>
---------------------------------	------------------------	---

**⚠** When local altimeter setting not received, use Binghamton altimeter setting and increase all DA 122 feet, all MDA 140 feet, and increase LPV and LNAV/VNAV visibilities ½ mile all Cats, and circling visibility Cat B ¼ mile. Baro-VNAV NA when using Binghamton altimeter setting. For uncompensated Baro-VNAV systems, LNAV/VNAV NA below -18°C (0°F) or above 54°C (130°F). Visibility reduction by helicopters NA. DME/DME RNP-0.3 NA.

**MISSED APPROACH:** Climb to 4500 direct RIYOV and right turn via 147° track to UYUNI and right turn via 237° track to OYADU and via 327° track to WODIT and hold.

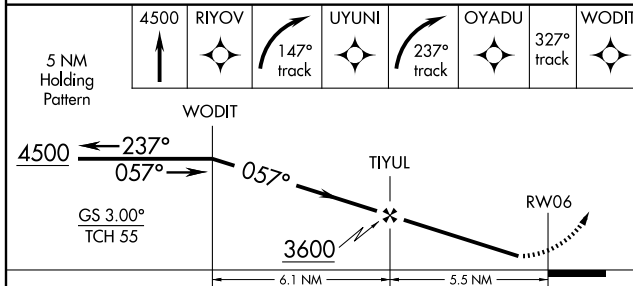
AWOS-3 <b>119.575</b>	BOSTON CENTER <b>133.25 279.5</b>	UNICOM <b>122.8 (CTAF)</b>
--------------------------	--------------------------------------	-------------------------------



NE-2, 22 OCT 2009 to 19 NOV 2009

NE-2, 22 OCT 2009 to 19 NOV 2009

5 NM Holding Pattern	4500	RIYOV	UYUNI	OYADU	327° track	WODIT
----------------------	------	-------	-------	-------	------------	-------



CATEGORY	A	B	C	D
LPV DA	2075-1	312 (400-1)		NA
LNAV/VNAV DA	2351-2	588 (600-2)		NA
LNAV MDA	2260-1	497 (500-1)		NA
CIRCLING	2340-1 577 (600-1)	2380-1 617 (700-1)		NA

