

MONROEVILLE, ALABAMA

AL-5394 (FAA)

VORTAC MVC 116.8 Chan 115	APP CRS 215°	Rwy Idg TDZE Apt Elev	6028 419 419
---	------------------------	-----------------------------	---

VOR RWY 21

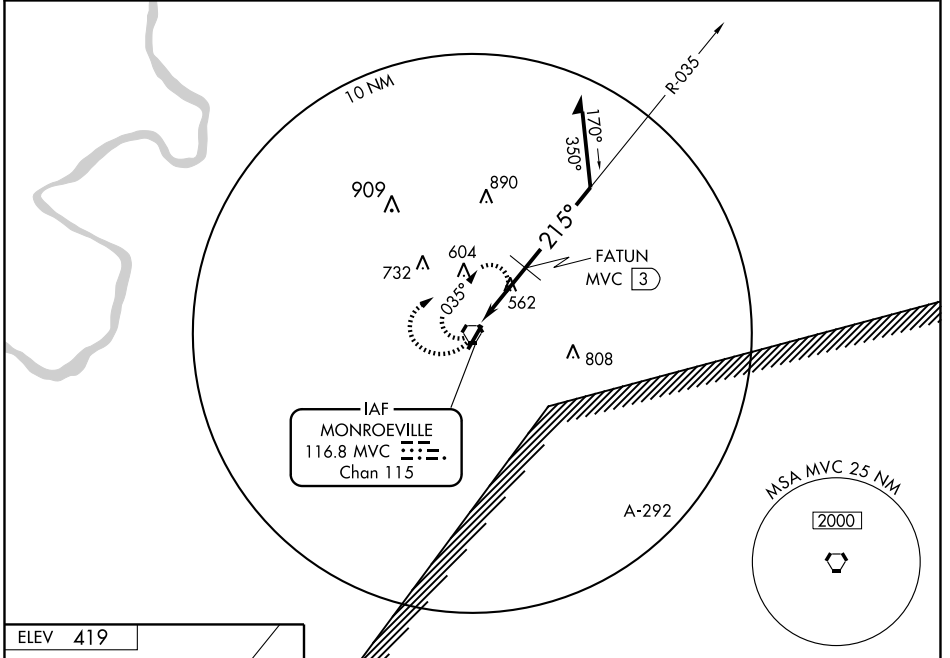
MONROEVILLE / MONROE COUNTY (MVC)

▼ Obtain local altimeter setting on CTAF, when not received, use Middleton Field altimeter setting and increase all MDAs 60 feet and S-21 visibility Cats. C and D ¼ mile and circling Cat. C visibility ¼ mile, and FATUN fix minimums increase S-21 visibility Cats. C and D ¼ mile. Visibility reduction by helicopters NA.

MISSILE APPROACH:
Climbing right turn to 2000 in MVC VORTAC holding pattern.

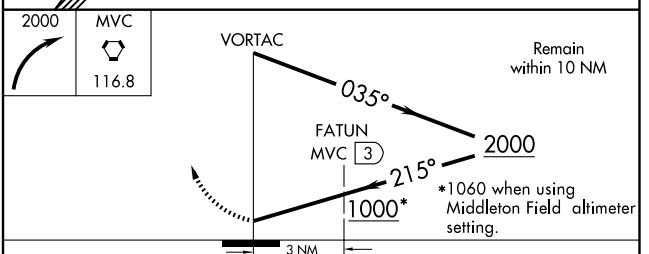
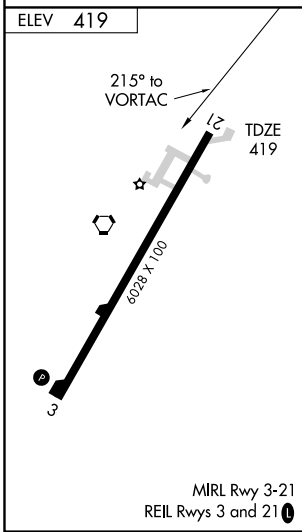
ATLANTA CENTER
118.55 267.9

UNICOM
123.0 (CTAF) 0



SE-4, 22 OCT 2009 to 19 NOV 2009

SE-4, 22 OCT 2009 to 19 NOV 2009



CATEGORY	A	B	C	D
S-21	1000-1	581 (600-1)	1000-1½ 581 (600-1½)	1000-1¾ 581 (600-1¾)
CIRCLING	1000-1	581 (600-1)	1000-1½ 581 (600-1½)	1000-2 581 (600-2)
FATUN FIX MINIMUMS				
S-21	880-1	461 (500-1)	880-1¼ 461 (500-1¼)	880-1½ 461 (500-1½)
CIRCLING	880-1	461 (500-1)	920-1½ 501 (600-1½)	980-2 561 (600-2)

MONROEVILLE, ALABAMA
Amdt 9 08297

MONROEVILLE / MONROE COUNTY (MVC)

31°27'N - 87°21'W

VOR RWY 21