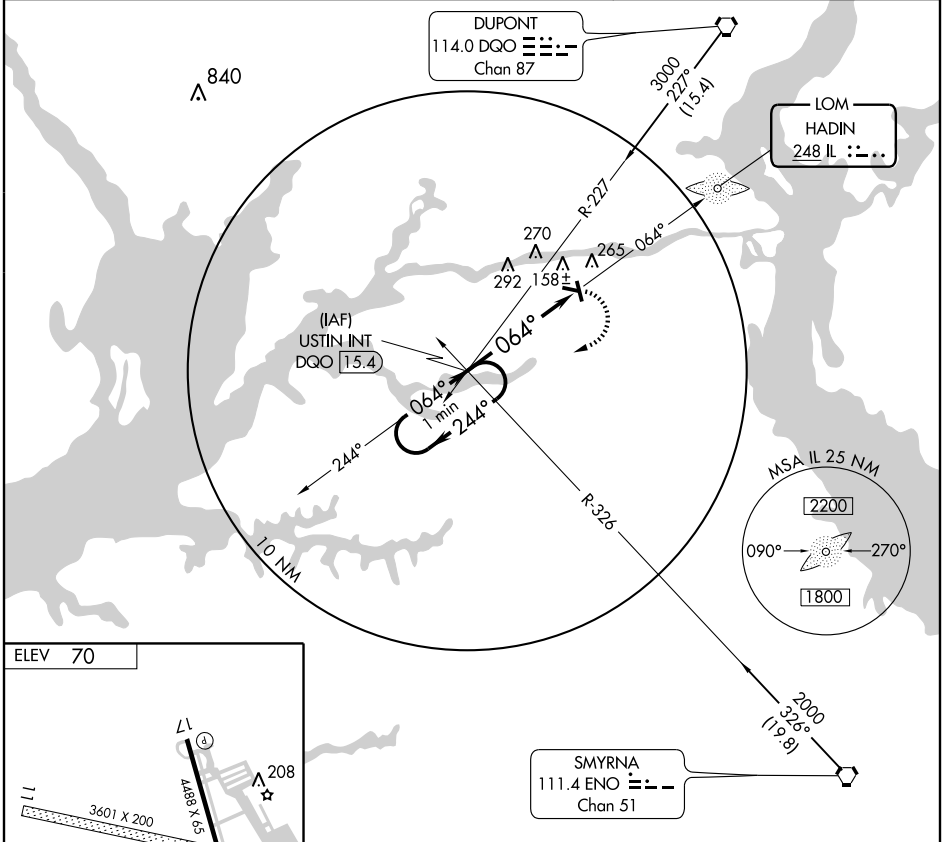


LOM IL 248	APP CRS 064°	Rwy Idg TDZE Apt Elev	N/A N/A 70
----------------------	------------------------	-----------------------------	---------------------------------------

NA If local altimeter setting not received, use Wilmington altimeter setting and increase all MDA's 40 feet.

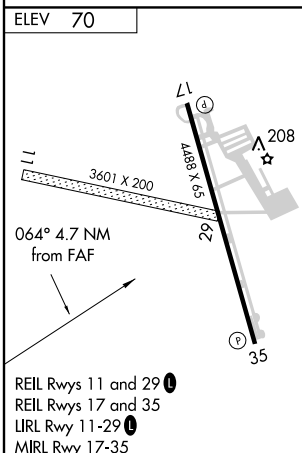
MISSED APPROACH: Climbing right turn to 2000 via heading 288° and 244° bearing from HADIN LOM to USTIN INT/DQO 15.4 DME and hold, continue climb-in-hold to 2000.

AWOS-3 132.325	PHILADELPHIA APP CON 118.35 323.1	CLNC DEL 125.3	UNICOM 122.725 (CTAF)	123.5 0
--------------------------	---	--------------------------	---------------------------------	-----------------------



NE-3, 22 OCT 2009 to 19 NOV 2009

NE-3, 22 OCT 2009 to 19 NOV 2009



FAF to MAP 4.7 NM					
Knots	60	90	120	150	180
Min:Sec	4:42	3:08	2:21	1:53	1:34

One Minute Holding Pattern USTIN INT DQO 15.4 2000 ← 244° 064° → 1700 * 064° → 4.7 NM	2000 HDG 288°	IL BRG 244° 248	USTIN INT
	CATEGORY A B C D	700-1 630 (700-1)	700-1¾ 630 (700-1¾)