

PERRYTON, TEXAS

AL-5391 (FAA)

# NDB or GPS-A

PERRYTON OCHILTREE COUNTY (PYX)

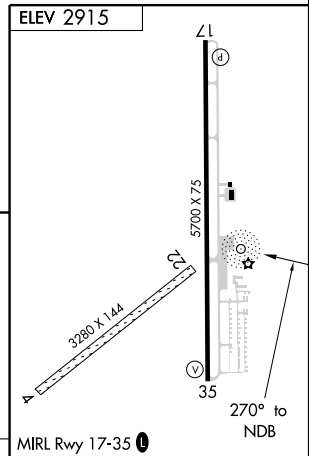
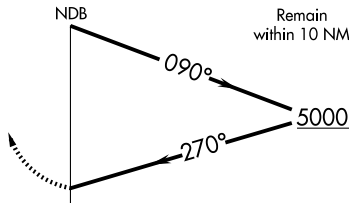
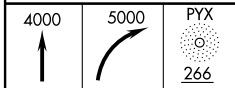
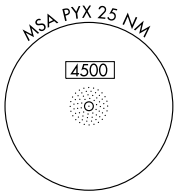
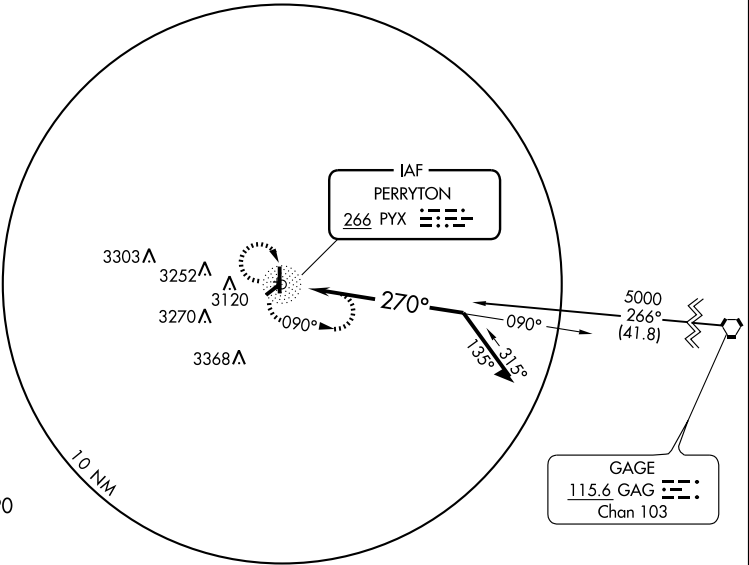
NDB PYX <b>266</b>	APP CRS <b>270°</b>	Rwy Idg TDZE Apt Elev	<b>N/A</b> <b>N/A</b> <b>2915</b>
-----------------------	------------------------	-----------------------------	---

<p><b>▲ NA</b></p> <p>Obtain local altimeter setting on UNICOM 122.8; when not available, use Gage altimeter setting and increase all MDAs 200 feet; when neither available procedure not authorized. Night minimums not authorized Rwy 4-22.</p>	<p>MISSED APPROACH: Climb to 4000 then climbing right turn to 5000 direct PYX NDB and hold.</p>
---	---

AWOS-3 <b>118.175</b>	KANSAS CITY CENTER <b>126.95 379.2</b>	UNICOM <b>122.8 (CTAF) 0</b>
--------------------------	---	---------------------------------

SC-2, 22 OCT 2009 to 19 NOV 2009

SC-2, 22 OCT 2009 to 19 NOV 2009



CATEGORY	A	B	C	D	Knots Min:Sec	60	90	120	150	180
CIRCLING	3340-1 425 (500-1)	3380-1 465 (500-1)	NA							

PERRYTON, TEXAS  
Amdt 3 06103

36°25'N-100°45'W

PERRYTON OCHILTREE COUNTY (PYX)  
**NDB or GPS-A**