

VOR/DME or GPS RWY 5

WURTSBORO-SULLIVAN COUNTY (N82)

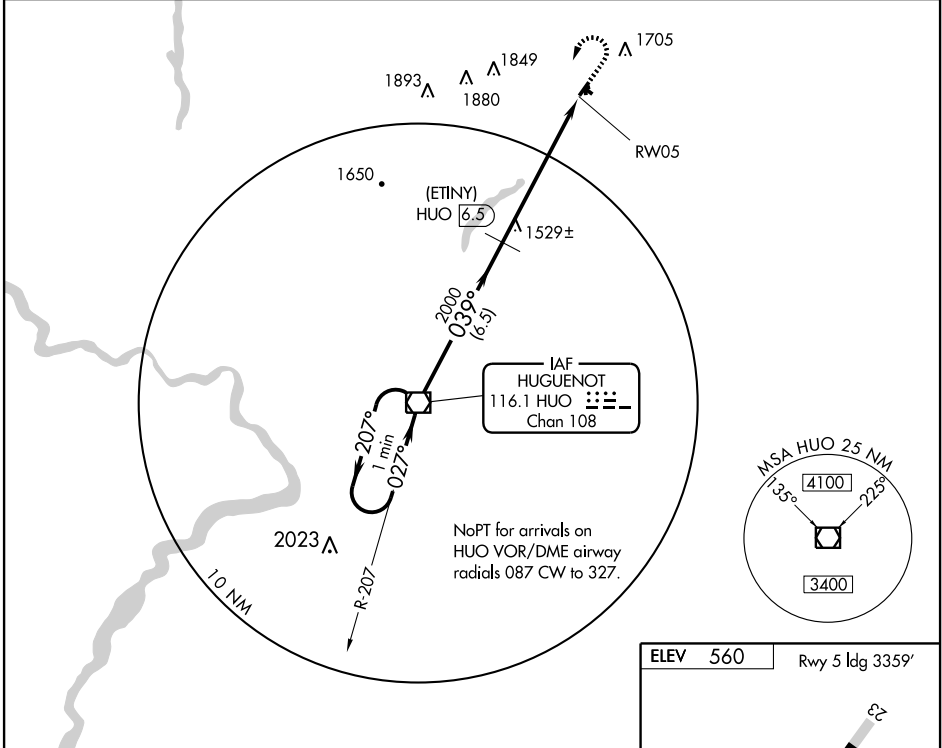
VOR/DME H _{UO}	APP CRS	Rwy ldg	3359
116.1	039°	TDZE	550
Chan 108		Apt Elev	560

▼ Obtain local altimeter setting on CTAF, when not received, procedure not authorized.
 ▲ NA Procedure not authorized at night.

MISSED APPROACH: Climb to 2300 then climbing left turn to 3500 direct H_{UO} VOR/DME and hold.

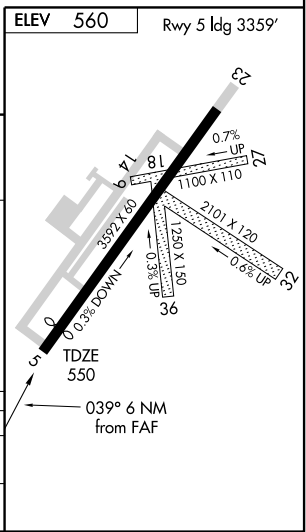
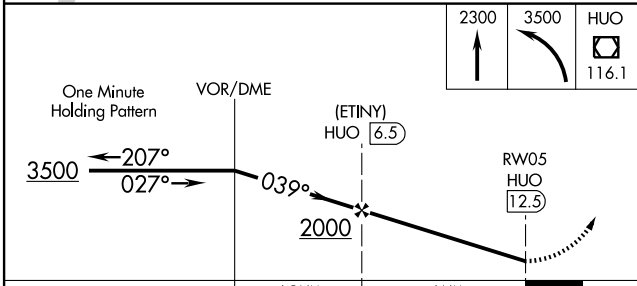
NEW YORK APP CON
132.75 363.1

UNICOM
122.8 (CTAF)



NE-2, 22 OCT 2009 to 19 NOV 2009

NE-2, 22 OCT 2009 to 19 NOV 2009



CATEGORY	A	B	C	D
S-5	1880-1¼ 1330 (1400-1¼)	1880-1½ 1330 (1400-1½)	1880-3 1330 (1400-3)	NA
CIRCLING	1880-1¼ 1320 (1400-1¼)	1880-1½ 1320 (1400-1½)	2020-3 1460 (1500-3)	NA