

STERLING ROCKFALLS/
WHITESIDE COUNTY AIRPORT-JOSEPH H. BITTORF FIELD (SQI)

RNAV (GPS) RWY 7

APP CRS	Rwy Idg	6498
069°	TDZE	648
	Apt Elev	648



When local altimeter setting not received, use Clinton altimeter setting and increase all MDA 80 feet and increase LNAV
Cat. C and D visibility ¼ mile. Visibility reduction by helicopters NA.
DME/DME RNP-0.3 NA. VDP NA when using Clinton altimeter setting.

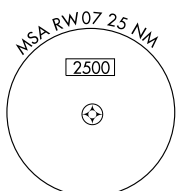
MISSED APPROACH: Climb to 2700 direct HELEG and hold.

AWOS-3
119.175

ROCKFORD APP CON
126.0 327.0

CLNC DEL
128.0

UNICOM
123.0 (CTAF) 0



Procedure NA for arrivals on CVA VORTAC airway radials 057 CW 083.

(IAF) DAVENPORT CVA

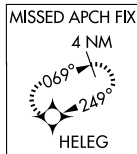
2700 093° (25.3)

(IF) KEBEY

2400 069° (6.1)

(FAF) JIGRO

IROCI 1.9 NM to RW07

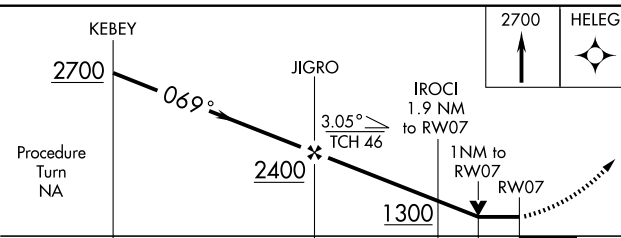
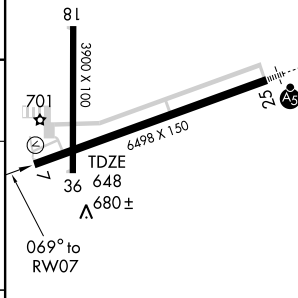


(IAF) GENSO

2700 093° (23.8)

Procedure NA for arrivals at GENSO via V8-38 Westbound.

ELEV 648



CATEGORY	A	B	C	D
LNAV MDA	1020-1 372 (400-1)		1020-1¼ 372 (400-1¼)	
CIRCLING	1140-1 492 (500-1)	1140-1½ 492 (500-1½)		1200-2 552 (600-2)

HIRL Rwy 7-25
MIRL Rwy 18-36
REIL Rws 7, 18 and 36

EC-3, 22 OCT 2009 to 19 NOV 2009

EC-3, 22 OCT 2009 to 19 NOV 2009