

WAAS CH 57910	APP CRS 249°	Rwy Idg TDZE Apt Elev	6498 647 648
-------------------------	------------------------	-----------------------------	---

STERLING ROCKFALLS/
WHITESIDE COUNTY AIRPORT-JOSEPH H. BITTORF FIELD (SQI)

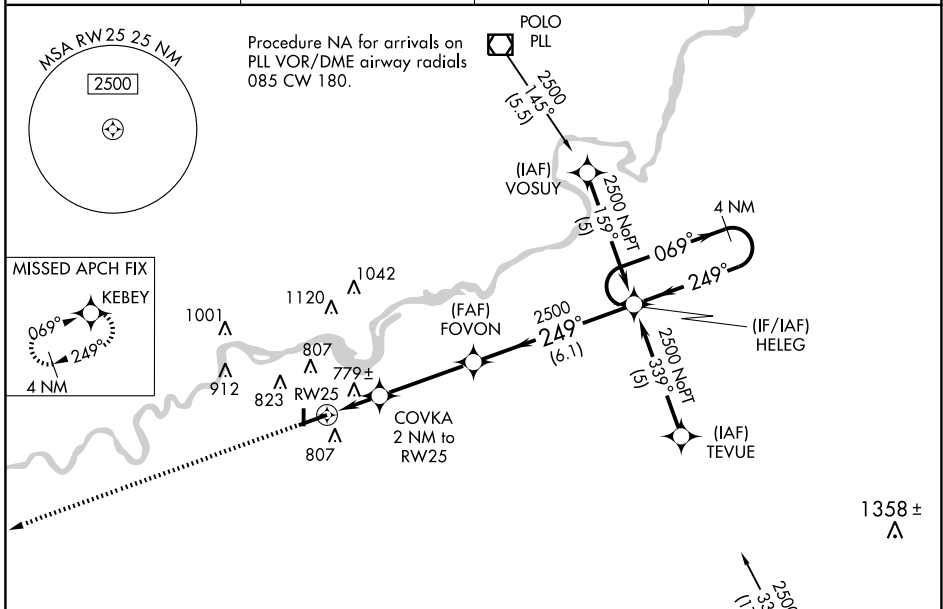
RNAV (GPS) RWY 25

When local altimeter setting not received, use Clinton altimeter setting and increase all DA and MDA 80 feet and increase LNAV/VNAV visibility all Cats. 1/4 mile. For uncompensated Baro-VNAV systems, LNAV/VNAV NA below -16°C (4°F) or above 47°C (116°F). DME/DME RNP-0.3 NA. VDP and Baro-VNAV NA when using Clinton altimeter setting. For inoperative MALSR, increase LNAV Cat. D visibility to 1/4 mile.



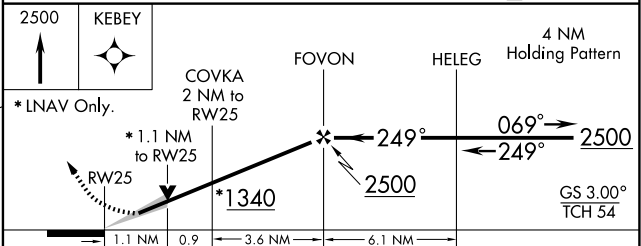
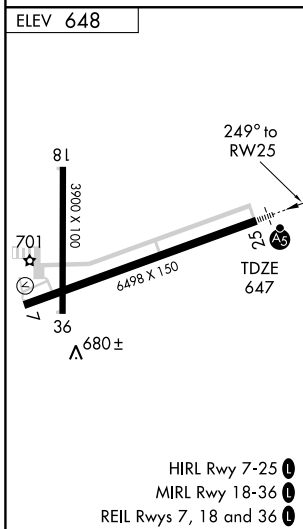
MISSED APPROACH: Climb to 2500 direct KEBEY and hold.

AWOS-3 119.175	ROCKFORD APP CON 126.0 327.0	CLNC DEL 128.0	UNICOM 123.0 (CTAF) 0
--------------------------	--	--------------------------	---------------------------------



EC-3, 22 OCT 2009 to 19 NOV 2009

EC-3, 22 OCT 2009 to 19 NOV 2009



CATEGORY	A	B	C	D
LPV DA	897-1/2 250 (300-1/2)			
LNAV/VNAV DA	1084-1 437 (500-1)			
LNAV MDA	1060-1/2 413 (500-1/2)	1060-3/4 413 (500-3/4)		1060-1 413 (500-1)
CIRCLING	1140-1 492 (500-1)	1140-1 1/2 492 (500-1 1/2)		1200-2 552 (600-2)