

# NDB RWY 7

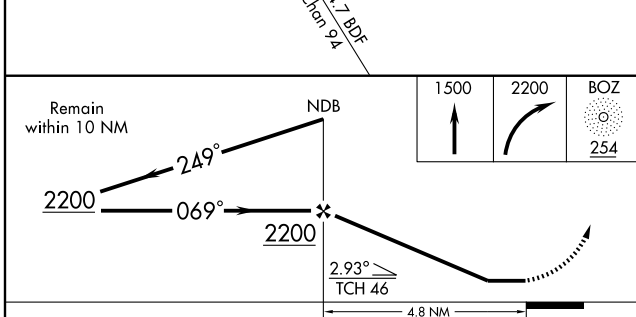
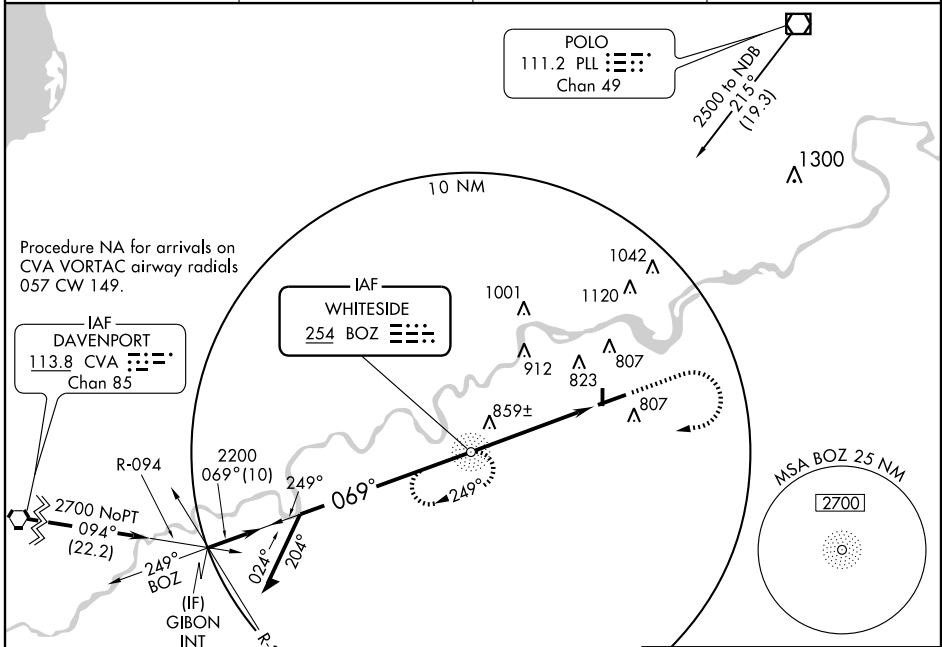
NDB BOZ <b>254</b>	APP CRS <b>069°</b>	Rwy Idg TDZE Apt Elev	<b>6498</b> <b>648</b> <b>648</b>
-----------------------	------------------------	-----------------------------	---

STERLING ROCKFALLS/  
WHITESIDE COUNTY AIRPORT-JOSEPH H. BITTORF FIELD (SQI)

**⚠** When local altimeter setting not received, use Clinton altimeter setting and increase all MDA 80 feet.  
**⚠** Visibility reduction by helicopters NA.

MISSED APPROACH: Climb to 1500 then climbing right turn to 2200 direct BOZ NDB and hold.

AWOS-3 <b>119.175</b>	ROCKFORD APP CON <b>126.0 327.0</b>	CLNC DEL <b>128.0</b>	UNICOM <b>123.0 (CTAF) 0</b>
--------------------------	--	--------------------------	---------------------------------



CATEGORY	A	B	C	D
S-7	1160-1 512 (600-1)	1160-1½ 512 (600-1½)	1160-1¾ 512 (600-1¾)	1160-2 512 (600-2)
CIRCLING	1160-1 512 (600-1)	1160-1½ 512 (600-1½)	1160-1¾ 512 (600-1¾)	1200-2 552 (600-2)

HIRL Rwy 7-25 0				
MIRL Rwy 18-36 0				
REIL Rwys 7, 18 and 36 0				
FAF to MAP 4.8 NM				
Knots	60	90	120	150 180
Min:Sec	4:48	3:12	2:24	1:55 1:36

EC-3, 22 OCT 2009 to 19 NOV 2009

EC-3, 22 OCT 2009 to 19 NOV 2009

# NDB RWY 7