

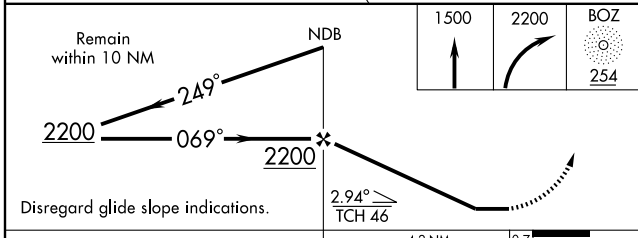
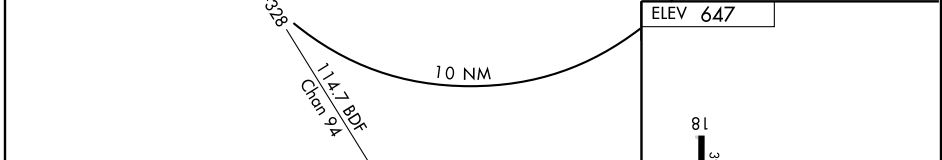
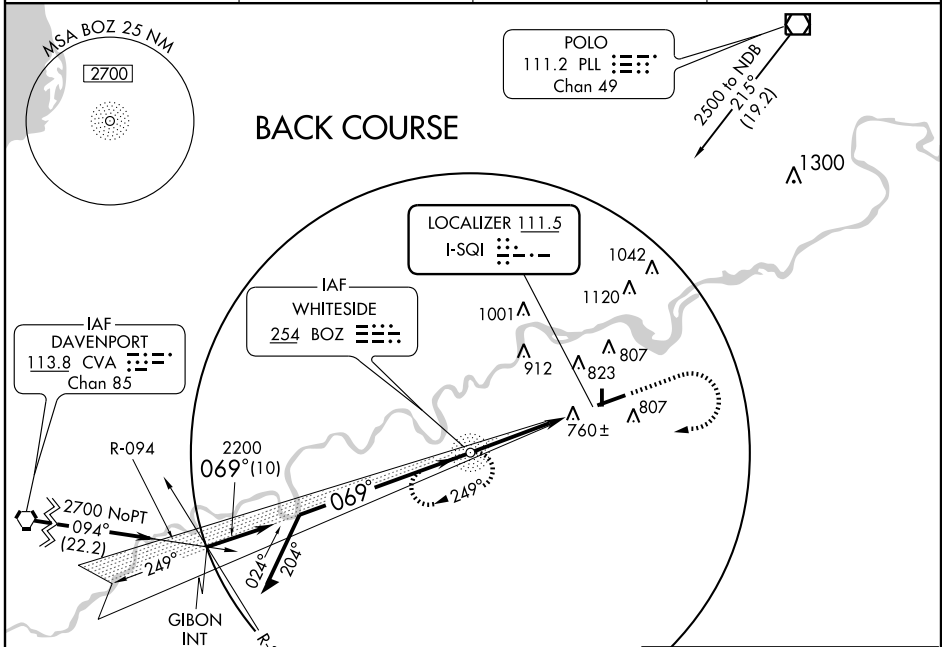
LOC BC RWY 7

STERLING ROCKFALLS/
WHITESIDE COUNTY AIRPORT-JOSEPH H. BITTORF FIELD (SQI)

LOC I-SQI 111.5	APP CRS 069°	Rwy Idg 6498
		TDZE 647
		Apt Elev 647

ADF REQUIRED	MISSED APPROACH: Climb to 1500 then climbing right turn to 2200 direct BOZ NDB and hold.
--------------	--

AWOS-3 119.175	ROCKFORD APP CON 126.0 327.0	CLNC DEL 128.0	UNICOM 123.0 (CTAF)
--------------------------	--	--------------------------	-------------------------------



CATEGORY	A	B	C	D
S-7	1020-1	373 (400-1)		1020-1½ 373 (400-1¼)
CIRCLING	1140-1	493 (500-1)	1140-1½ 493 (500-1½)	1200-2 553 (600-2)

MIRL Rwy 18-36 HIRL Rwy 7-25 REIL Rwys 7, 18 and 36					
FAF to MAP 4.2 NM					
Knots	60	90	120	150	180
Min:Sec	4:12	2:48	2:06	1:41	1:24

EC-3, 22 OCT 2009 to 19 NOV 2009

EC-3, 22 OCT 2009 to 19 NOV 2009