

COLUMBUS, OHIO

AL-5387 (FAA)

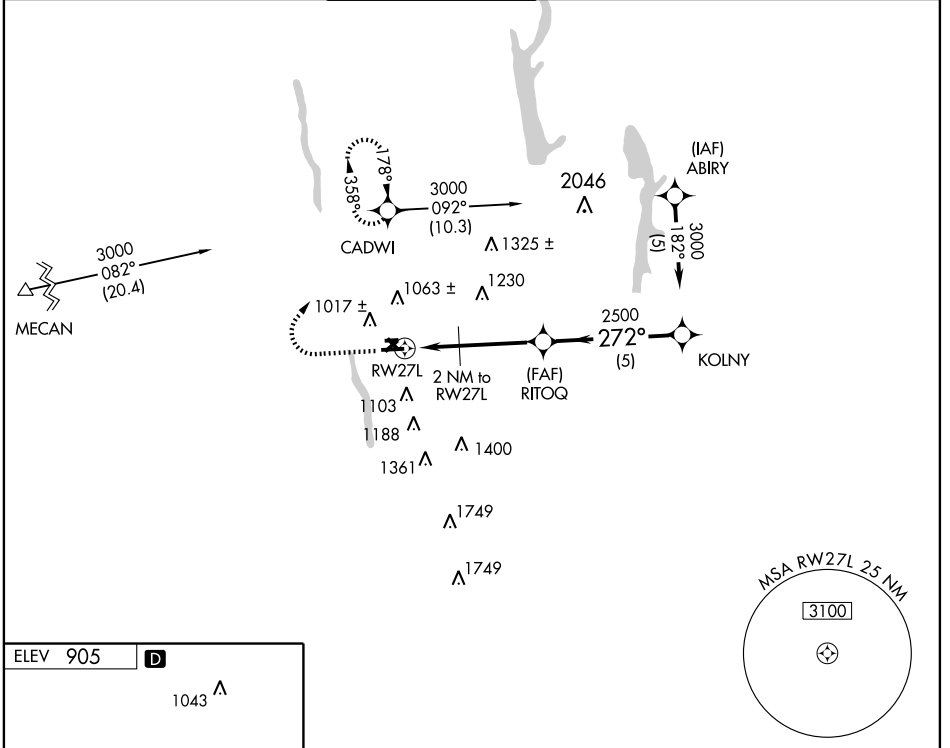
GPS RWY 27L

COLUMBUS/OHIO STATE UNIVERSITY (OSU)

APP CRS 272°	Rwy Idg 5004
	TDZE 903
	Apt Elev 905

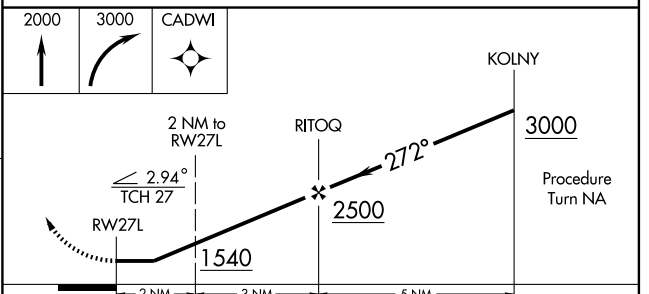
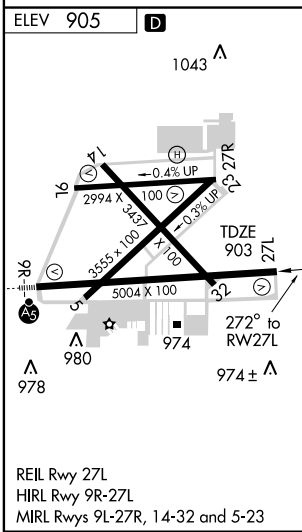
<p>⚠ NA</p>		<p>MISSED APPROACH: Climb to 2000, then climbing right turn to 3000 direct CADWI WP and hold.</p>			
--------------------	--	---	--	--	--

<p>ATIS 121.35</p>	<p>COLUMBUS APP CON 120.2 317.775</p>	<p>STATE TOWER* 118.8 (CTAF) 258.3</p>	<p>GND CON 121.7</p>	<p>CLNC DEL 121.7</p>	<p>UNICOM 122.95</p>
-------------------------------	--	---	---------------------------------	----------------------------------	---------------------------------



EC-2, 22 OCT 2009 to 19 NOV 2009

EC-2, 22 OCT 2009 to 19 NOV 2009



CATEGORY	A	B	C	D
S-27L	1280-1 377 (400-1)			1280-1¼ 377 (400-1¼)
CIRCLING	1380-1	475 (500-1)	1380-1½ 475 (500-1½)	1460-2 555 (600-2)

COLUMBUS, OHIO
Amdt 1A 09295

40°05'N - 83°04'W

COLUMBUS/OHIO STATE UNIVERSITY (OSU)
GPS RWY 27L