

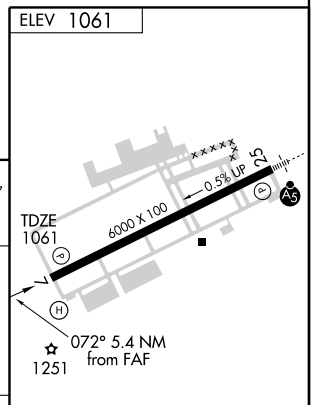
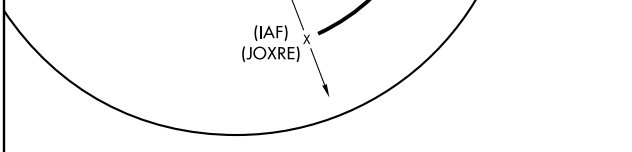
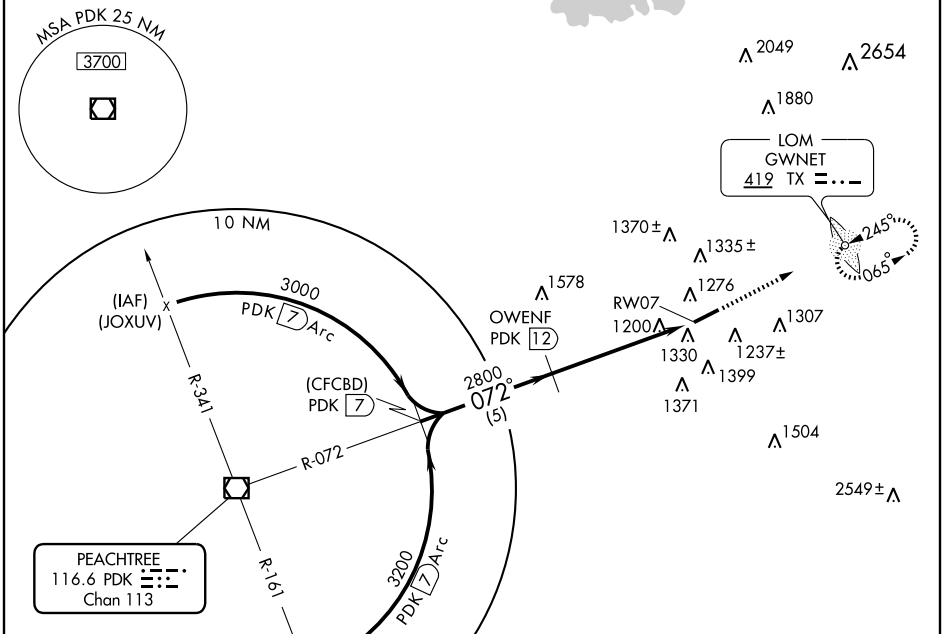
VOR/DME PDK <b>116.6</b> Chan <b>113</b>	APP CRS <b>072°</b>	Rwy Idg TDZE Apt Elev	<b>6000</b> <b>1061</b> <b>1061</b>
--	------------------------	-----------------------------	---

# VOR/DME or GPS RWY 7

LAWRENCEVILLE/GWINNETT COUNTY-BRISCOE FIELD (LZU)

ADF REQUIRED		MISSED APPROACH: Climb to 3000 direct TX LOM and hold.		
--------------	--	--	--	--

ATIS <b>132.275</b>	ATLANTA APP CON <b>126.975 239.275</b>	<b>GWINNETT TOWER</b> ★ <b>124.1</b> (CTAF) <b>0</b>	GND CON <b>121.8</b>	CLNC DEL <b>121.8</b>	ATLANTA CLNC DEL <b>134.0</b> (When tower closed)	UNICOM <b>123.05</b>
------------------------	---	---	-------------------------	--------------------------	---	-------------------------



CATEGORY	A	B	C	D
S-7	1660-1	599 (600-1)	1660-1½ 599 (600-1½)	1660-1¾ 599 (600-1¾)
CIRCLING	1660-1	599 (600-1)	1660-1½ 599 (600-1½)	1700-2 638 (700-2)

HIRL Rwy 7-25	Knots	60	90	120	150	180
	Min:Sec					

SE-4, 22 OCT 2009 to 19 NOV 2009

SE-4, 22 OCT 2009 to 19 NOV 2009