

NDB or GPS RWY 25

LAWRENCEVILLE/GWINNETT COUNTY-BRISCOE FIELD (LZU)

LOM TX 419	APP CRS 245°	Rwy Idg 6000
		TDZE 1038
		Apt Elev 1061

NA If local altimeter setting not received, use Atlanta altimeter setting and increase all MDAs 200 feet.

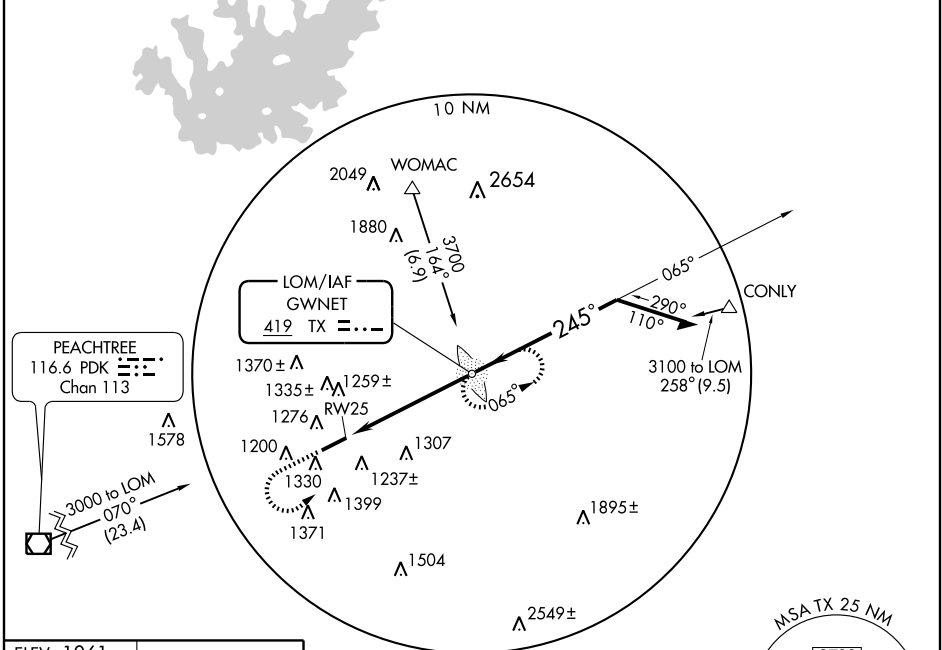


MISSED APPROACH: Climb to 1800, then climbing left turn to 3000 direct TX LOM and hold.

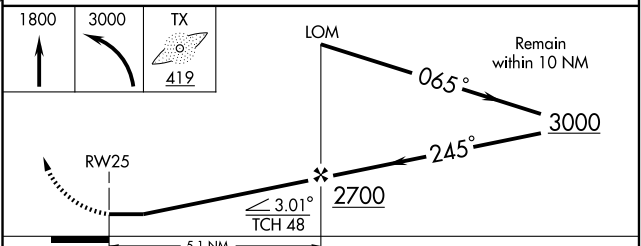
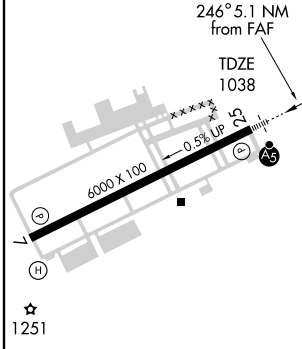
ATIS 132.275	ATLANTA APP CON 126.975 239.275	GWINNETT TOWER ★ 124.1 (CTAF) 0	GND CON 121.8	CLNC DEL 121.8	ATLANTA CLNC DEL 134.0 (When tower closed)	UNICOM 123.05
------------------------	---	---	-------------------------	--------------------------	---	-------------------------

SE-4, 22 OCT 2009 to 19 NOV 2009

SE-4, 22 OCT 2009 to 19 NOV 2009



ELEV 1061



HIRL Rwy 7-25 **0**

FAF to MAP 5.1 NM

Knots	60	90	120	150	180
Min:Sec	5:06	3:24	2:33	2:02	1:42

CATEGORY	A	B	C	D
S-25	1600- ³ / ₄ 562 (600- ³ / ₄)	562 (600-1)	1600-1 562 (600-1)	1600-1½ 562 (600-1½)
CIRCLING	1640-1	579 (600-1)	1640-1½ 579 (600-1½)	1700-2 639 (700-2)