

ASHLAND, WISCONSIN

AL-5383 (FAA)

VOR RWY 31

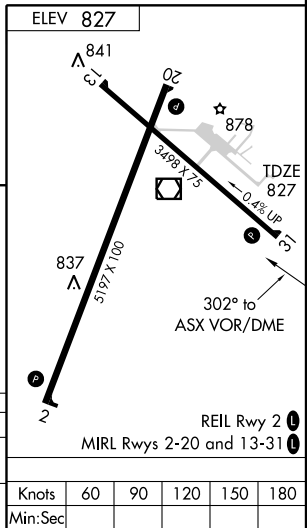
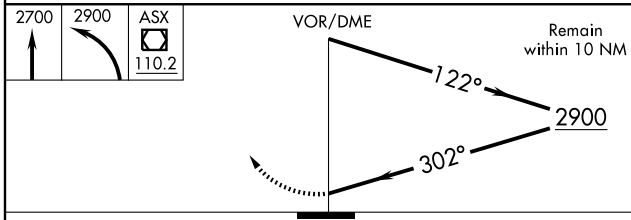
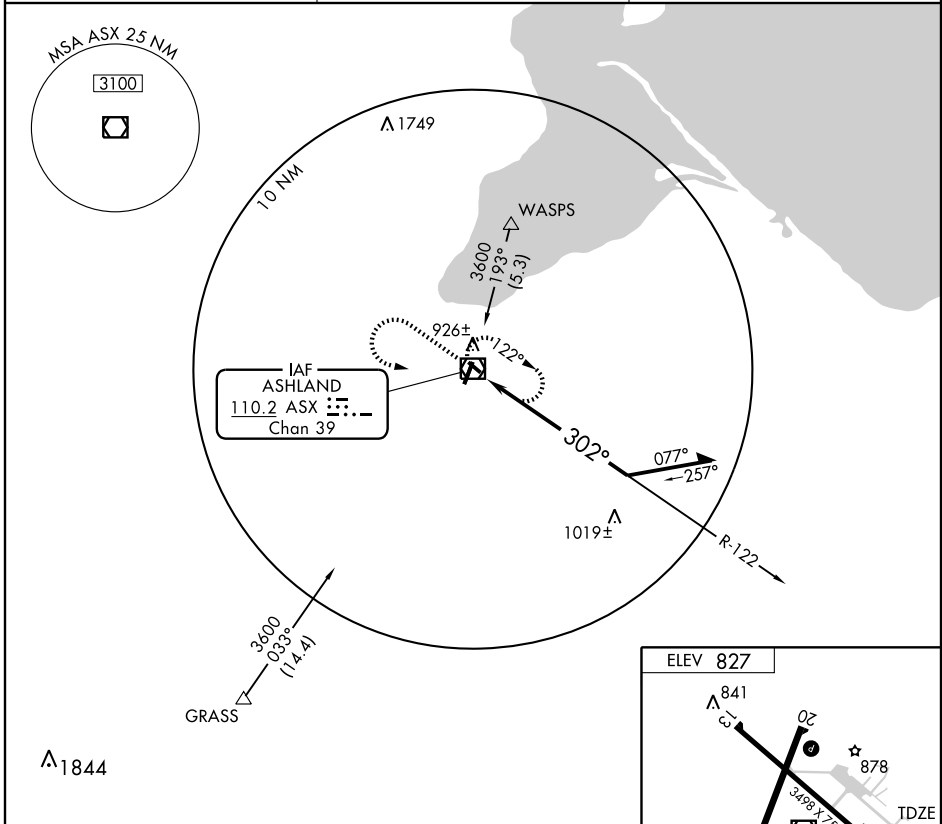
ASHLAND/ JOHN F. KENNEDY MEMORIAL (ASX)

VOR/DME ASX 110.2 Chan 39	APP CRS 302°	Rwy Idg TDZE Apt Elev	3498 827 827
--	------------------------	-----------------------------	---

▼ Visibility reduction by helicopters NA. When local altimeter setting not received, use Ironwood altimeter setting and increase all MDAs 140 feet, increase S-31 visibility Cat. C and D ½ mile, increase circling visibility Cat. C ½ mile, Cat. D ¼ mile.

MISSED APPROACH: Climb to 2700 then climbing left turn to 2900 direct ASX VOR/DME and hold.

ASOS 126.775	MINNEAPOLIS CENTER 126.45 276.4	UNICOM 122.8 (CTAF) 1
------------------------	---	--



CATEGORY	A	B	C	D
S-31	1400-1 573 (600-1)		1400-1½ 573 (600-1½)	1400-1¾ 573 (600-1¾)
CIRCLING	1400-1 573 (600-1)		1400-1½ 573 (600-1½)	1400-2 573 (600-2)

Knots	60	90	120	150	180
Min:Sec					

ASHLAND, WISCONSIN
Amdt 7 08157

ASHLAND/ JOHN F. KENNEDY MEMORIAL (ASX)

46°33'N-90°55'W

VOR RWY 31

EC-3, 22 OCT 2009 to 19 NOV 2009

EC-3, 22 OCT 2009 to 19 NOV 2009