

VOR RWY 2

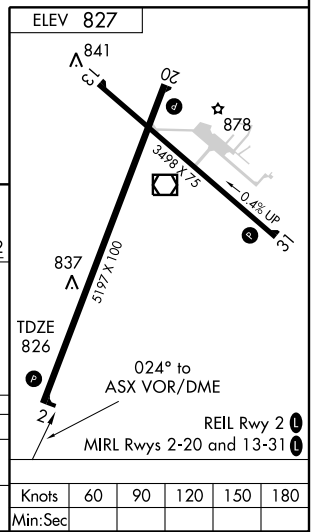
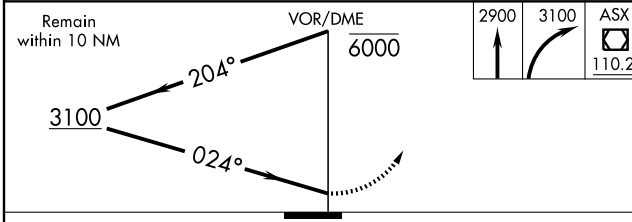
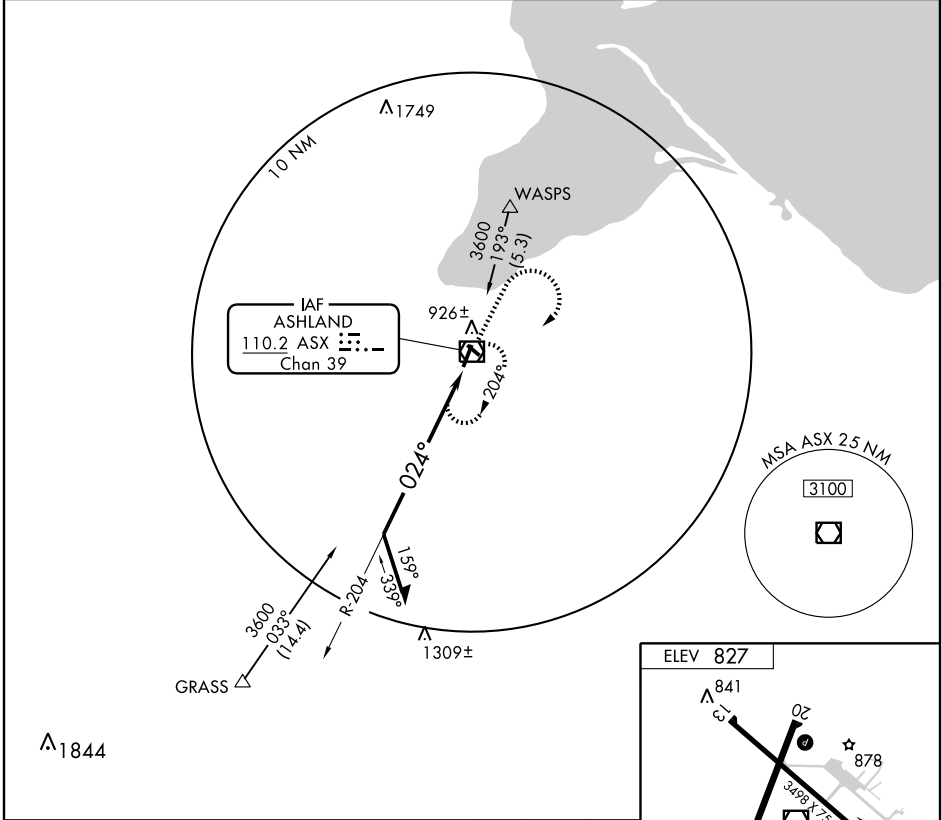
ASHLAND/ JOHN F. KENNEDY MEMORIAL (ASX)

VOR/DME ASX 110.2 Chan 39	APP CRS 024°	Rwy Idg TDZE Apt Elev	5197 826 827
--	------------------------	-----------------------------	---

⚠ Visibility reduction by helicopters NA. When local altimeter setting not received, use Ironwood altimeter setting and increase all MDAs 140 feet and visibility Cat. A ¼ mile, Cat. C and D ½ mile.

MISSED APPROACH: Climb to 2900 then climbing right turn 3100 direct ASX VOR/DME and hold.

ASOS 126.775	MINNEAPOLIS CENTER 126.45 276.4	UNICOM 122.8 (CTAF) 📻
------------------------	---	--



CATEGORY	A	B	C	D
S-2	1620-1 794 (800-1)	1620-1¼ 794 (800-1¼)	1620-2¼ 794 (800-2¼)	1620-2½ 794 (800-2½)
CIRCLING	1620-1 793 (800-1)	1620-1¼ 793 (800-1¼)	1620-2¼ 793 (800-2¼)	1620-2½ 793 (800-2½)

Knots	60	90	120	150	180
Min:Sec					

EC-3, 22 OCT 2009 to 19 NOV 2009

EC-3, 22 OCT 2009 to 19 NOV 2009