

# RNAV (GPS) RWY 20

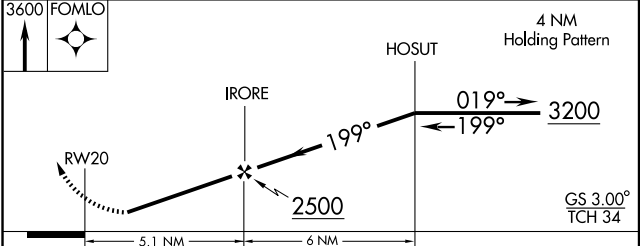
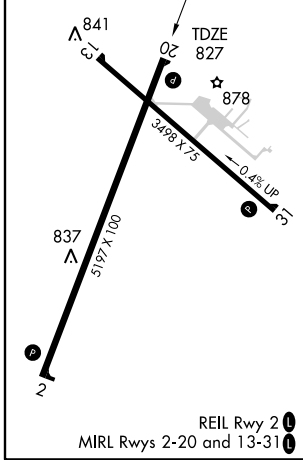
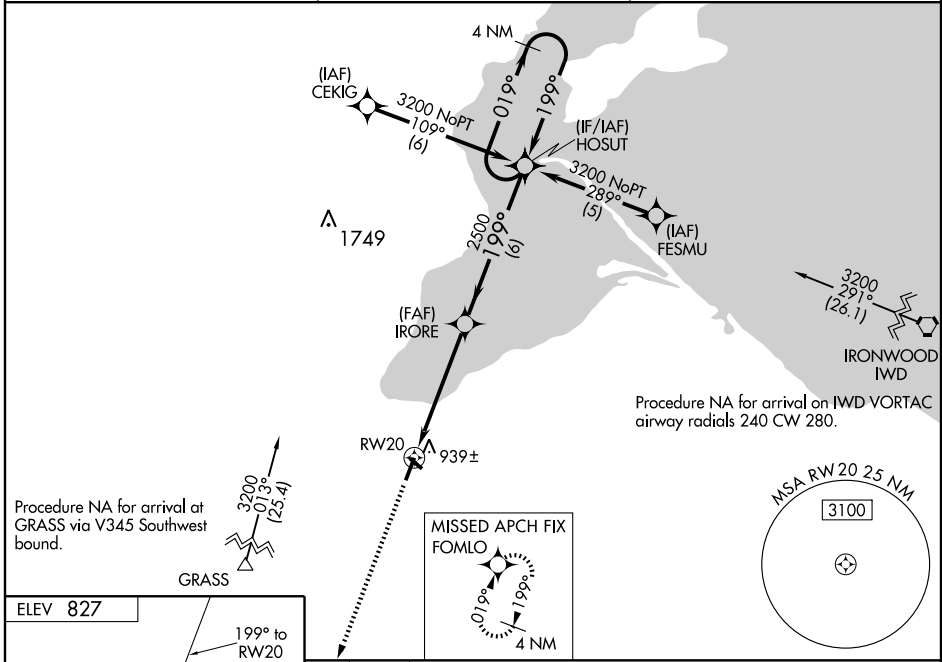
ASHLAND/ JOHN F. KENNEDY MEMORIAL (ASX)

WAAS CH <b>90307</b> <b>W20A</b>	APP CRS <b>199°</b>	Rwy Idg <b>5197</b>
		TDZE <b>827</b>
		Apt Elev <b>827</b>

Baro-VNAV NA when using Ironwood altimeter setting. For uncompensated Baro-VNAV systems, LNAV/VNAV NA below -16°C (4°F) or above 47°C (116°F). DME/DME RNP-0.3 NA. Visibility reduction by helicopters NA. When local altimeter setting not received, use Ironwood altimeter setting and increase all DAs 132 feet and LPV all Cats. visibility ½ mile, LNAV/VNAV all Cats. visibility ¼ mile, increase all MDAs 140 feet and LNAV Cat. C and D visibility ½ mile and Circling Cat. D visibility ¼ mile.

MISSED APPROACH: Climb to 3600 direct FOMLO and hold.

ASOS <b>126.775</b>	MINNEAPOLIS CENTER <b>126.45 276.4</b>	UNICOM <b>122.8 (CTAF)</b>
------------------------	---	-------------------------------



CATEGORY	A	B	C	D
LPV DA		1187-1¼	360 (400-1¼)	
LNAV/VNAV DA		1209-1½	382 (400-1½)	
LNAV MDA	1200-1	373 (400-1)		1200-1¼ 373 (400-1¼)
CIRCLING	1240-1 413 (500-1)	1280-1 453 (500-1)	1280-1½ 453 (500-1½)	1380-2 553 (600-2)

EC-3, 22 OCT 2009 to 19 NOV 2009

EC-3, 22 OCT 2009 to 19 NOV 2009