

LOC/DME I-ASX <b>109.3</b> Chan <b>30</b>	APP CRS <b>019°</b>	Rwy Idg TDZE Apt Elev	<b>5197</b> <b>825</b> <b>826</b>
---	------------------------	-----------------------------	---

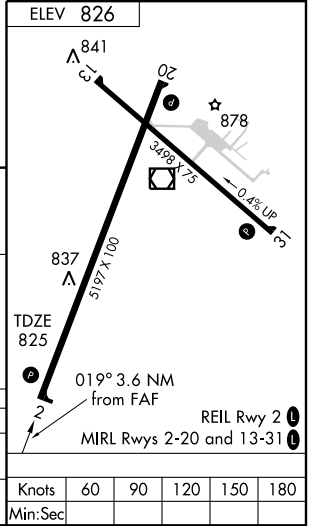
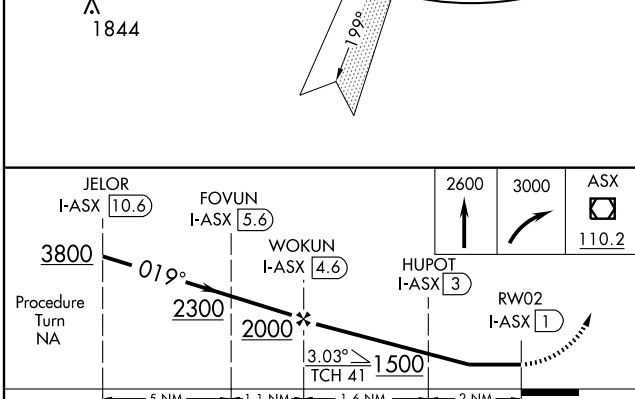
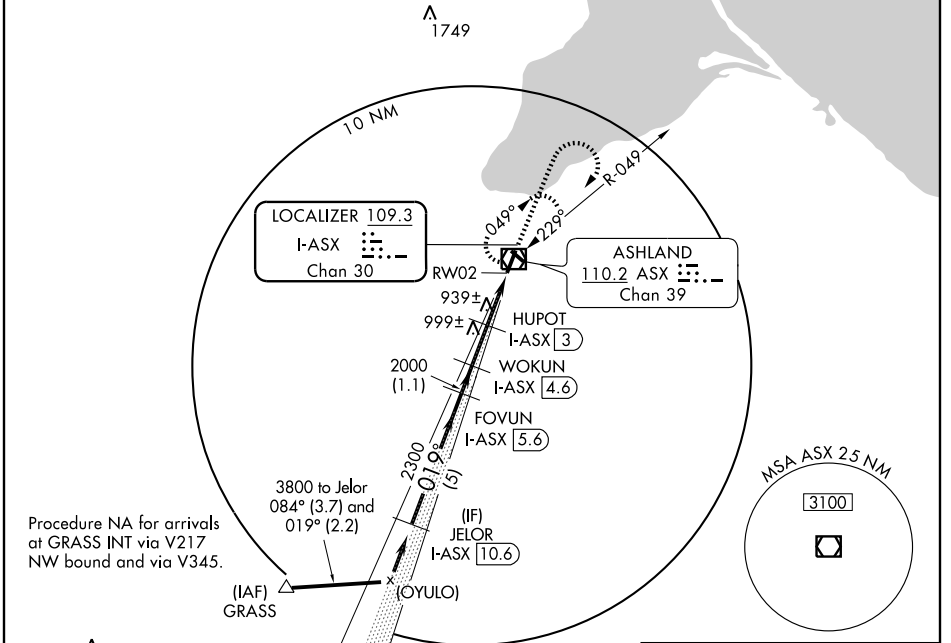
# LOC/DME RWY 2

ASHLAND/ JOHN F. KENNEDY MEMORIAL (ASX)

**NA** If local altimeter setting not received, use Ironwood altimeter setting and increase all MDAs 140 feet. Visibility reduction by helicopters NA.

**MISSED APPROACH:** Climb to 2600 then climbing right turn to 3000 direct ASX VOR/DME and hold.

ASOS <b>126.775</b>	MINNEAPOLIS CENTER <b>126.45 276.4</b>	UNICOM <b>122.8 (CTAF)</b>
------------------------	---	-------------------------------



CATEGORY	A	B	C	D
S-2	1200-1	375 (400-1)		1200-1¼ 375 (400-1¼)
CIRCLING	1240-1 414 (500-1)	1280-1 454 (500-1)	1280-1½ 454 (500-1½)	1380-2 554 (600-2)

# LOC/DME RWY 2

EC-3, 22 OCT 2009 to 19 NOV 2009

EC-3, 22 OCT 2009 to 19 NOV 2009