

GLASGOW, MONTANA

AL-5382 (FAA)

NDB RWY 30

GLASGOW/WOKAL FIELD/GLASGOW INTL (GGW)

NDB MKR 339	APP CRS 272°	Rwy Idg TDZE Apt Elev	5001 2291 2294
-----------------------	------------------------	-----------------------------	---

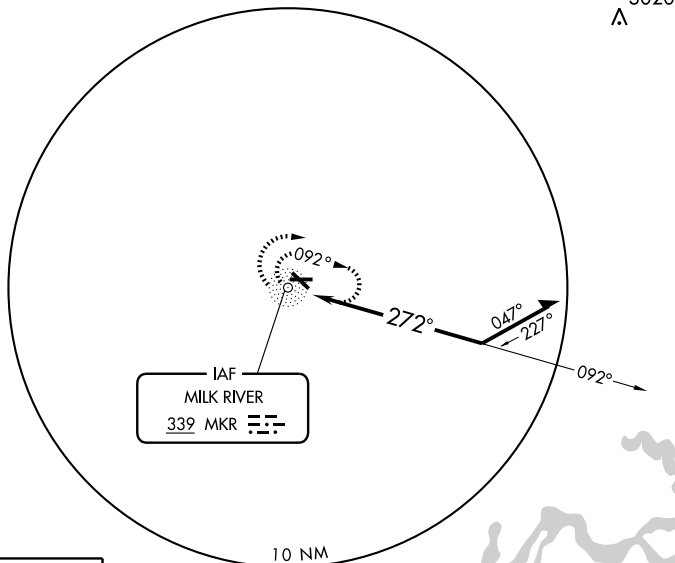
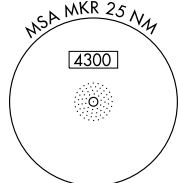
ACTIVATE MIRL Rwy 8-26 and 12-30-CTAF.

MISSED APPROACH: Climb to 3900 in MKR NDB holding pattern.

ASOS
135.175

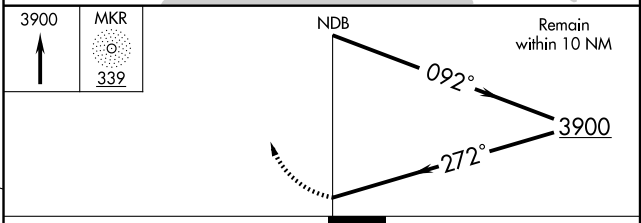
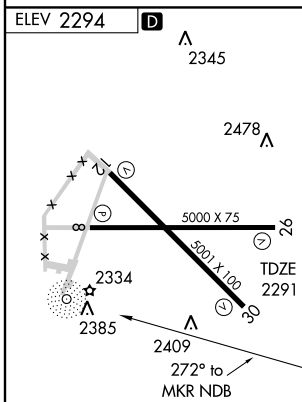
SALT LAKE CENTER
126.85 305.2

UNICOM
122.8 (CTAF) 0



NW-1, 22 OCT 2009 to 19 NOV 2009

NW-1, 22 OCT 2009 to 19 NOV 2009



REIL Rwy 8, 12, 26 and 30
MIRL Rwy 8-26 and 12-30

CATEGORY	A	B	C	D
S-30	2840-1	549 (600-1)	2840-1½ 549 (600-1½)	2840-1¾ 549 (600-1¾)
CIRCLING	2840-1	547 (600-1)	2840-1½ 547 (600-1½)	2860-2 567 (600-2)

GLASGOW, MONTANA
Amdt 1 08325

GLASGOW/WOKAL FIELD/GLASGOW INTL (GGW)
48°13'N - 106°37'W

NDB RWY 30