

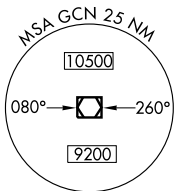
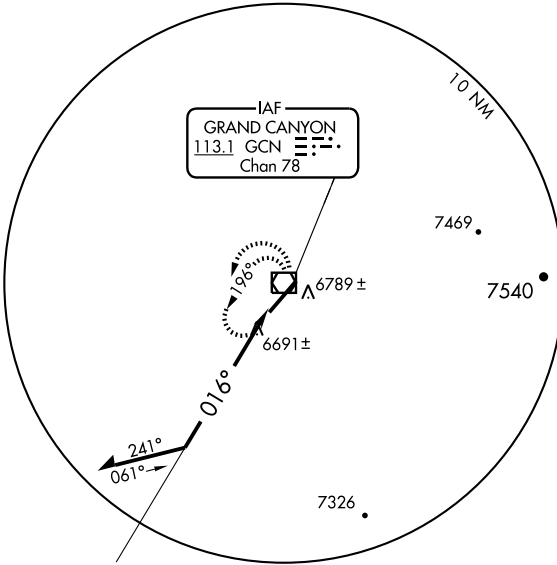
# VOR RWY 3

GRAND CANYON NATIONAL PARK (GCN)

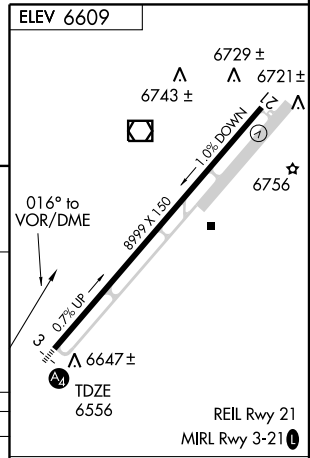
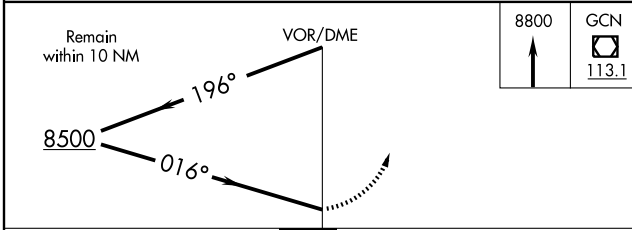
VOR/DME GCN <b>113.1</b> Chan 78	APP CRS <b>016°</b>	Rwy Idg <b>8999</b> TDZE <b>6556</b> Apt Elev <b>6609</b>
--	------------------------	--

Inoperative table does not apply to S-3 Cat C.	MALS - - - 	MISSED APPROACH: Climb to 8800 in GCN VOR/DME holding pattern.		
		ATIS <b>124.3</b>	LOS ANGELES CENTER <b>124.85 319.2</b>	CANYON TOWER ★ <b>119.0 (CTAF) 0</b>

UNICOM <b>122.95</b>
-------------------------



Descend in GCN VOR/DME holding pattern to 11000 before commencing procedure turn.



CATEGORY	A	B	C	D
S-3	7100- $\frac{3}{4}$ 544 (600- $\frac{3}{4}$ )		7100-1 $\frac{1}{2}$ 544 (600-1 $\frac{1}{2}$ )	7100-1 $\frac{3}{4}$ 544 (600-1 $\frac{3}{4}$ )
CIRCLING	7140-1 531 (600-1)		7160-1 $\frac{1}{2}$ 551 (600-1 $\frac{1}{2}$ )	7220-2 611 (700-2)

Knots	60	90	120	150	180
Min:Sec					

SW-4, 22 OCT 2009 to 19 NOV 2009

SW-4, 22 OCT 2009 to 19 NOV 2009