

RNAV (GPS) RWY 3

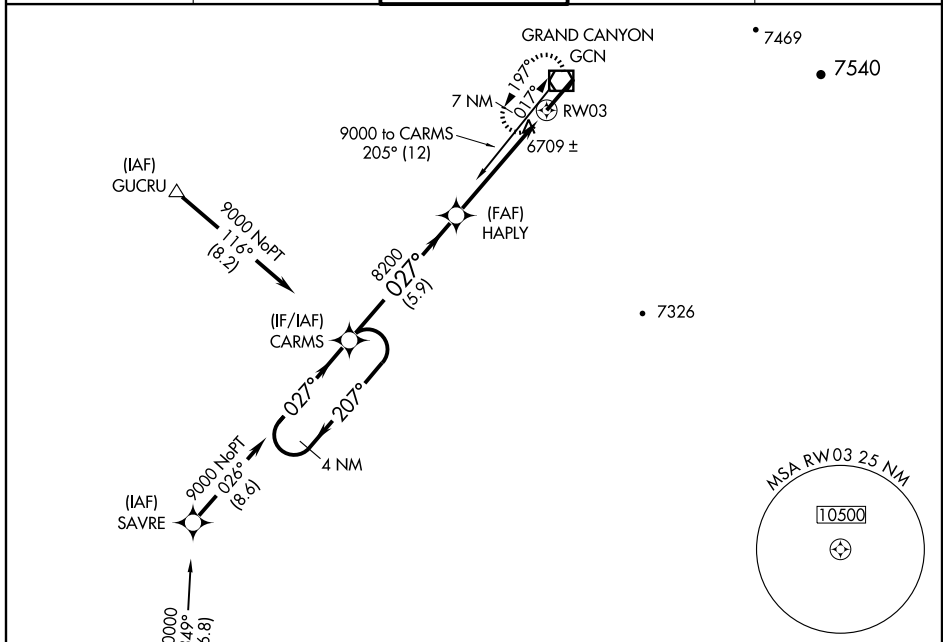
GRAND CANYON NATIONAL PARK (GCN)

APP CRS	Rwy Idg	8999
027°	TDZE	6556
	Apt Elev	6609

⚠ GPS or RNP-0.3 required. DME/DME RNP-0.3 NA.
⚠ NA Baro-VNAV NA below -28°C (-18°F).
 Inoperative table does not apply to LNAV Cat C.

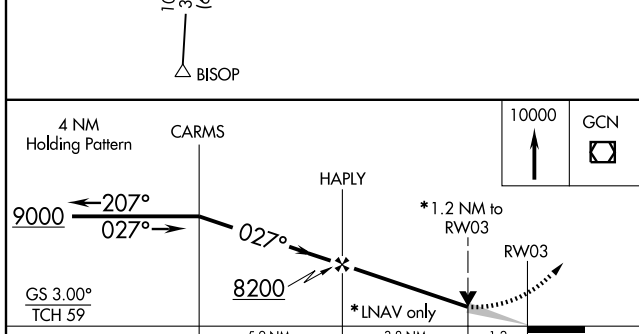
MALS
 MISSED APPROACH: Climb to 10000 direct GCN
 VOR/DME and hold.

ATIS 124.3	LOS ANGELES CENTER 124.85 319.2	CANYON TOWER* 119.0(CTAF)	GND CON 121.9	UNICOM 122.95
----------------------	---	-------------------------------------	-------------------------	-------------------------



SW-4, 22 OCT 2009 to 19 NOV 2009

SW-4, 22 OCT 2009 to 19 NOV 2009



CATEGORY	A				B				C				D											
GLS PA DA	NA																							
LNAV/VNAV DA	6960-1½				404 (400-1½)																			
LNAV MDA	6960-¾				404 (400-¾)				6960-1¼				404 (400-1¼)											
CIRCLING	7140-1½				531 (600-1½)				7160-1½				551 (600-1½)				7220-2				611 (700-2)			

