


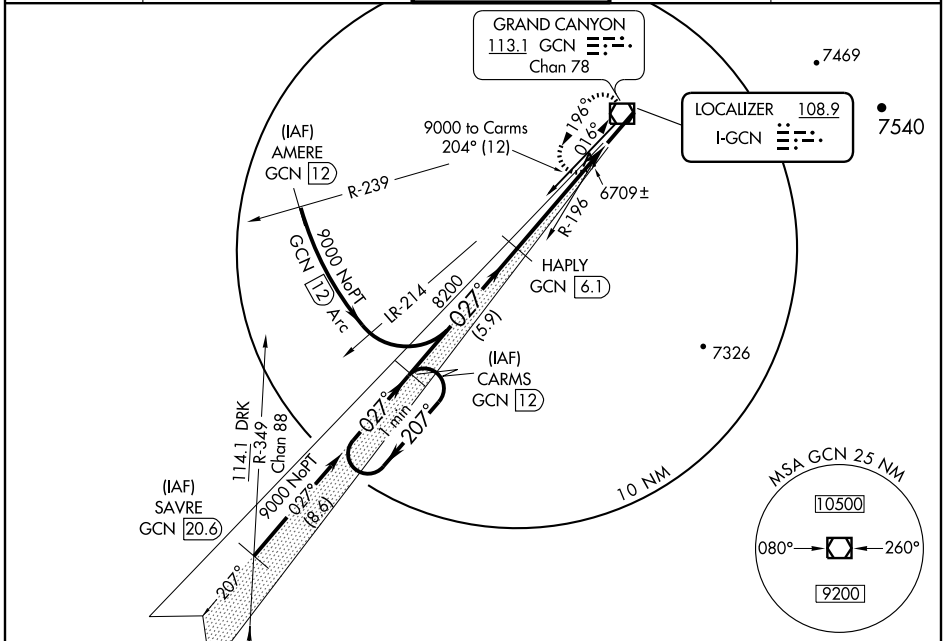
ILS or LOC/DME RWY 3

GRAND CANYON NATIONAL PARK (GCN)

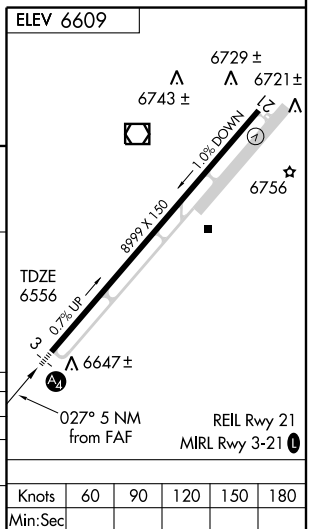
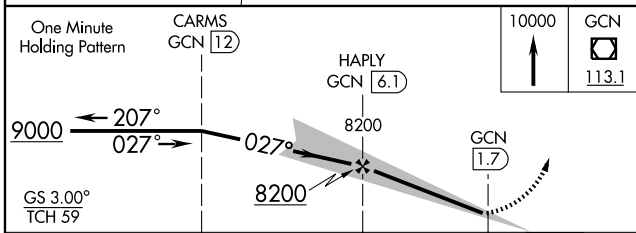
LOC I-GCN 108.9	APP CRS 027°	Rwy Idg 8999
		TDZE 6556
		Apt Elev 6609

<p>⚠ DME from GCN VOR/DME. Simultaneous reception of I-GCN and GCN DME required. Inoperative table does not apply to S-LOC 3 CAT C.</p>	<p>MALS </p>	<p>MISSED APPROACH: Climb to 10000 direct GCN VOR/DME and hold.</p>
--	--	---

ATIS 124.3	LOS ANGELES CENTER 124.85 319.2	CANYON TOWER * 119.0 (CTAF) 0	GND CON 121.9	UNICOM 122.95
----------------------	---	---	-------------------------	-------------------------



DME REQUIRED



CATEGORY	A	B	C	D
S-ILS 3		6765-¾	209 (200-¾)	
S-LOC 3	6960-¾	404 (400-¾)	6960-1¼	404 (400-1¼)
CIRCLING	7140-1	531 (600-1)	7160-1½	7220-2
			551 (600-1½)	611 (700-2)

Knots	60	90	120	150	180
Min:Sec					