

# VOR RWY 35

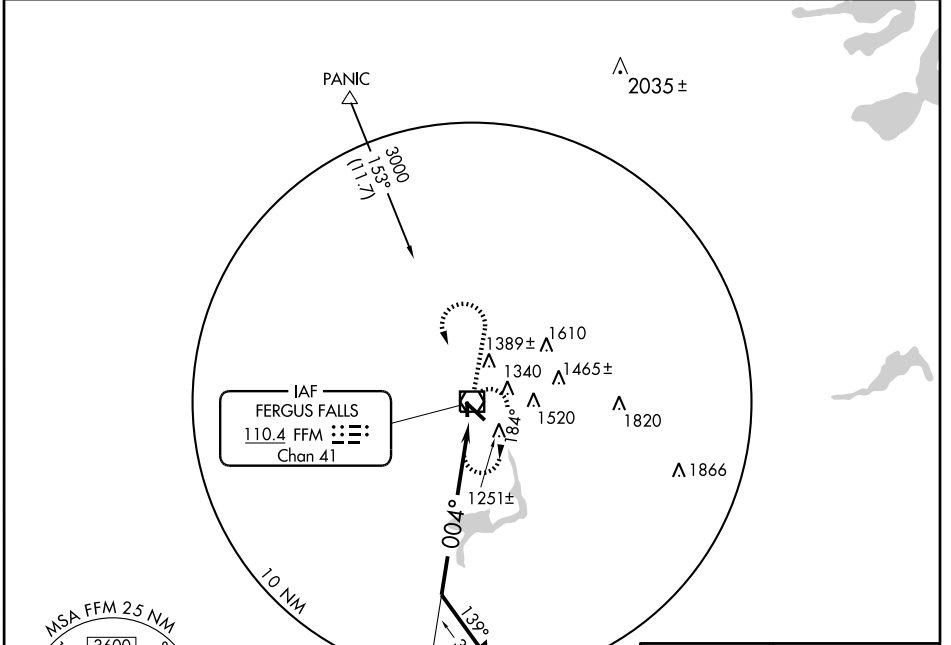
FERGUS FALLS MUNI-EINAR MICKELSON FIELD (F'FM)

VOR/DME FFM <b>110.4</b> Chan 41	APP CRS <b>004°</b>	Rwy Idg <b>3301</b> TDZE <b>1182</b> Apt Elev <b>1183</b>
--	------------------------	---

**NA** When local altimeter setting not received, use Wheaton altimeter setting and increase all MDA 120 feet, S-35 Cat C visibility ¼ mile and Circling Cat C visibility ½ mile

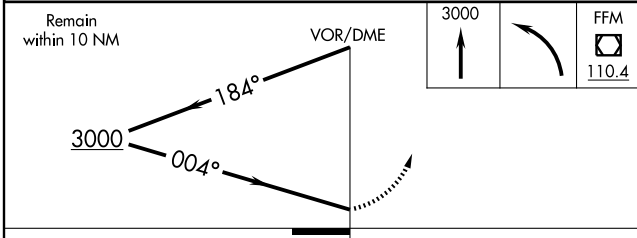
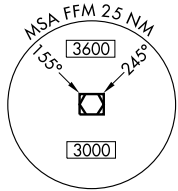
MISSED APPROACH: Climb to 3000 then left turn direct FFM VOR/DME and hold.

AWOS-3 <b>110.4</b>	PRINCETON RADIO <b>122.35</b>	UNICOM <b>122.8 (CTAF) 0</b>
------------------------	----------------------------------	---------------------------------

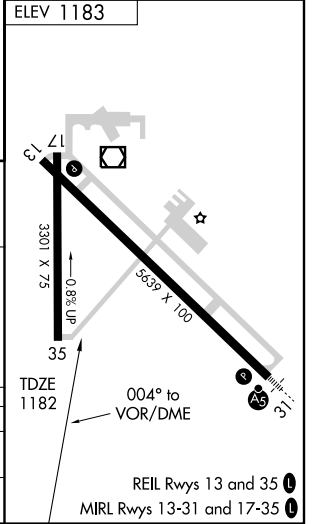


NC-1, 22 OCT 2009 to 19 NOV 2009

NC-1, 22 OCT 2009 to 19 NOV 2009



CATEGORY	A	B	C	D
S-35	1600-1	418 (500-1)	1600-1¼ 418 (500-1¼)	NA
CIRCLING	1640-1 457 (500-1)	1740-1 557 (600-1)	1740-1½ 557 (600-1½)	NA



REIL Rwy 13 and 35 0  
MIRL Rwy 13-31 and 17-35 0