

VOR RWY 13

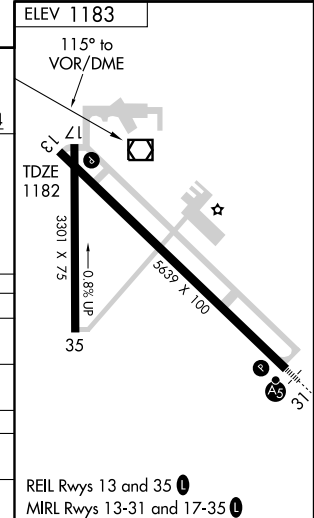
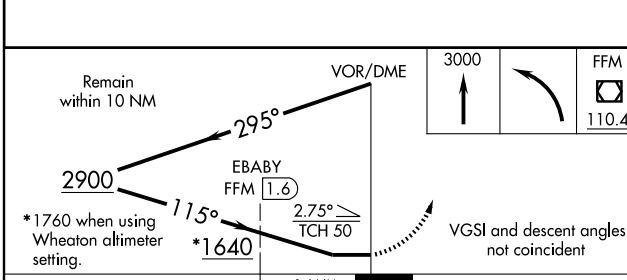
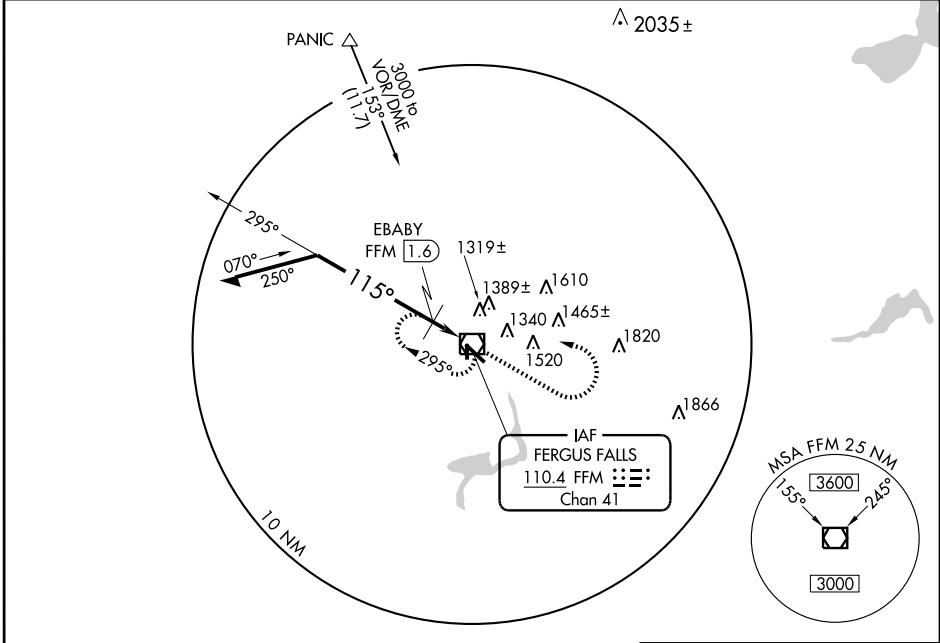
FERGUS FALLS MUNI-EINAR MICKELSON FIELD (F^{FM})

VOR/DME FFM 110.4 Chan 41	APP CRS 115°	Rwy ldg 5639 TDZE 1182 Apt Elev 1183
---	------------------------	---

▼ Cat D straight-in minima NA when using Wheaton altimeter setting. When local altimeter setting not received, use Wheaton altimeter setting and increase all MDA 120 feet, and S-13 Cat C and D visibility ½ mile, Circling Cat C and D visibility ½ mile, increase EBABY FIX minimums S-13 and Circling Cat C and D visibility ½ mile.

MISSED APPROACH: Climb to 3000 then left turn direct FFM VOR/DME and hold.

AWOS-3 110.4	PRINCETON RADIO 122.35	UNICOM 122.8 (CTAF)
------------------------	----------------------------------	-------------------------------



CATEGORY	A	B	C	D
S-13	1640-1	458 (500-1)	1640-1¼ 458 (500-1¼)	1640-1½ 458 (500-1½)
CIRCLING	1640-1 457 (500-1)	1740-1 557 (600-1)	1740-1½ 557 (600-1½)	1880-2¼ 697 (700-2¼)
EBABY FIX MINIMUMS				
S-13	1580-1 398 (400-1)		1580-1¼ 398 (400-1¼)	
CIRCLING	1640-1 457 (500-1)	1740-1 557 (600-1)	1740-1½ 557 (600-1½)	1880-2¼ 697 (700-2¼)

VOR RWY 13

NC-1, 22 OCT 2009 to 19 NOV 2009

NC-1, 22 OCT 2009 to 19 NOV 2009