

RNAV (GPS) RWY 35

FERGUS FALLS MUNI-EINAR MICKELSON FIELD (F'F'M)

APP CRS	Rwy Idg	3301
354°	TDZE	1182
	Apt Elev	1183

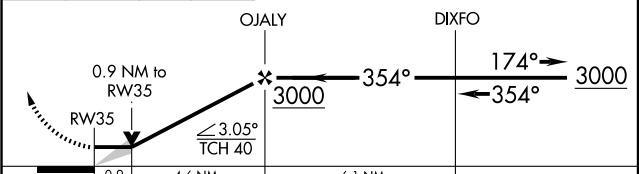
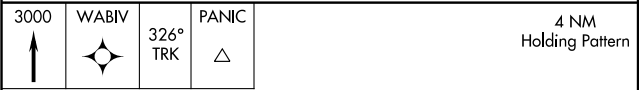
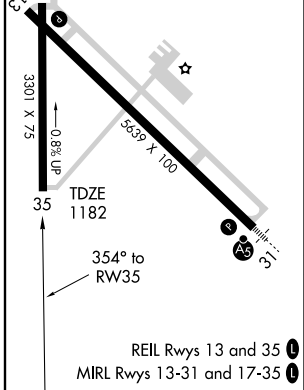
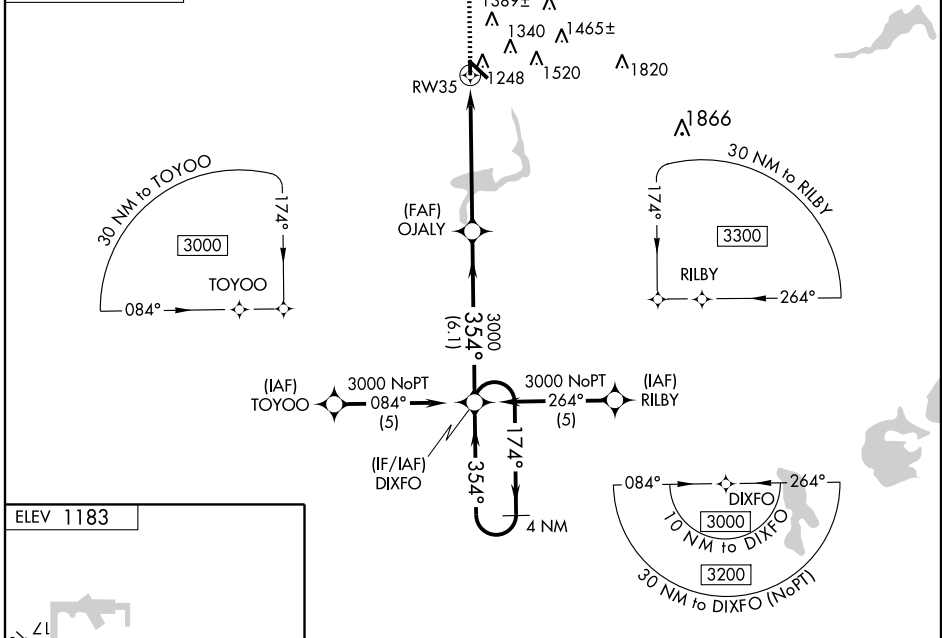
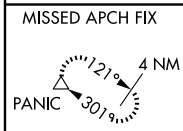
▼ DME/DME RNP-0.3 NA. When local altimeter setting not received, use Wheaton altimeter setting and increase all MDA 120 feet and LNAV Cat C visibility ¼ mile, Circling Cat C ½ mile. VDP NA when using Wheaton altimeter setting.

▲ MISSED APPROACH: Climb to 3000 direct WABIV and via track 326° to PANIC and hold.

AWOS-3
110.4

PRINCETON RADIO
122.35

UNICOM
122.8 (CTAF) 0



CATEGORY	A	B	C	D
LNAV MDA	1500-1 318 (400-1)			NA
CIRCLING	1640-1 457 (500-1)	1740-1 557 (600-1)	1740-1½ 557 (600-1½)	NA

NC-1, 22 OCT 2009 to 19 NOV 2009

NC-1, 22 OCT 2009 to 19 NOV 2009