

RNAV (GPS) RWY 31

FERGUS FALLS MUNI-EINAR MICKELSON FIELD (F^FM)

WAAS CH 42614 W31A	APP CRS 308°	Rwy Idg TDZE 1182 Apt Elev 1183	5639
---------------------------------	------------------------	---	-------------

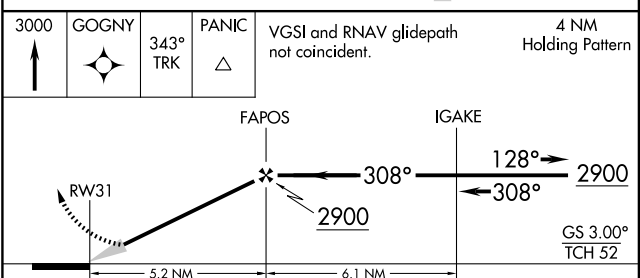
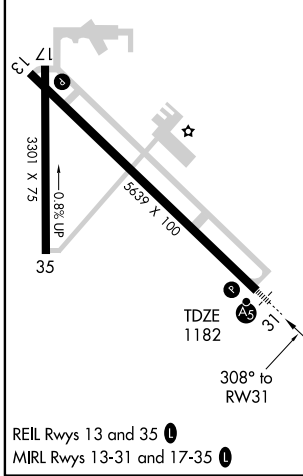
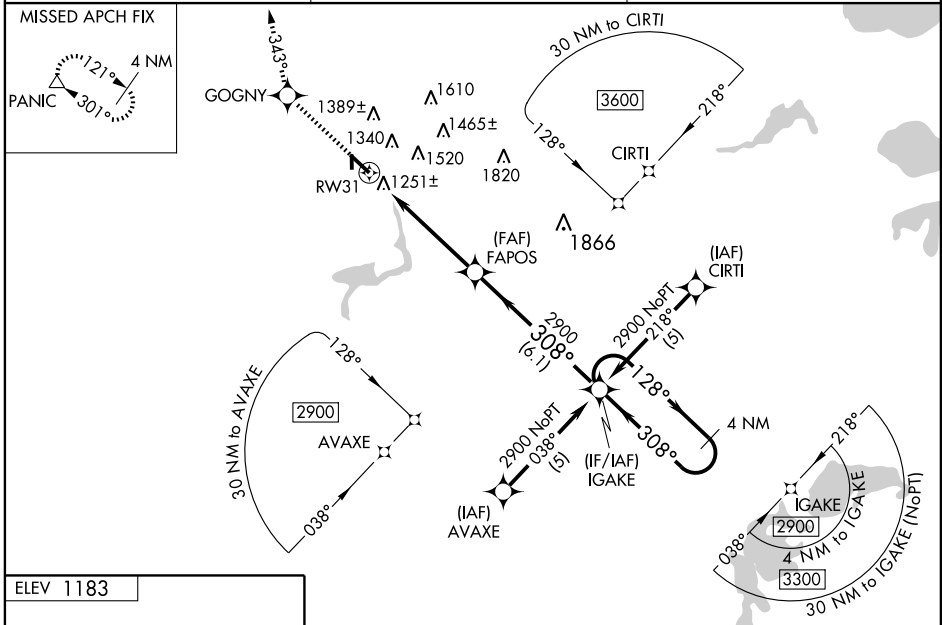
⚠ Inoperative table does not apply to LNAV Cat D. Baro-VNAV NA when using Wheaton altimeter setting. DME/DME RNP-0.3 NA. When local altimeter setting not received, use Wheaton altimeter setting and increase all DA 102 feet and all MDA 120 feet, LNAV/VNAV all Cats and Circling Cats C and D visibility 1/2 mile and LNAV Cat C 3/4 mile. For inoperative MALS R when using Wheaton altimeter setting, increase LPV all Cats visibility 1/2 mile.

MALS R



MISSED APPROACH:
Climb to 3000 direct GOGNY and via track 343° to PANIC and hold.

AWOS-3 110.4	PRINCETON RADIO 122.35	UNICOM 122.8 (CTAF) 0
------------------------	----------------------------------	---------------------------------



CATEGORY	A	B	C	D
LPV DA		1382-1/2	200 (200-1/2)	
LNAV/VNAV DA		1545-3/4	363 (400-3/4)	
LNAV MDA		1520-1/2	338 (400-1/2)	1520-1 338 (400-1)
CIRCLING	1640-1 457 (500-1)	1740-1 557 (600-1)	1740-1 1/2 557 (600-1 1/2)	1880-2 1/4 697 (700-2 1/4)

NC-1, 22 OCT 2009 to 19 NOV 2009

NC-1, 22 OCT 2009 to 19 NOV 2009