


ILS or LOC RWY 31

FERGUS FALLS MUNI-EINAR MICKELSON FIELD (FFM)

LOC I-FFM 111.5	APP CRS 308°	Rwy Idg 5639
		TDZE 1182
		Apt Elev 1183

⚠ When local altimeter setting not received, use Wheaton altimeter setting and increase all DA 102 feet and all MDA 120 feet, increase S-LOC 31 and Circling Cat C and D visibility 1/2 mile. For inoperative MALS, increase S-LOC 31 Cat D visibility 1/4 mile. For inoperative MALS when using Wheaton altimeter setting, increase S-ILS 31 all Cats visibility 1/2 mile. GS unusable for coupled approaches below 1400.

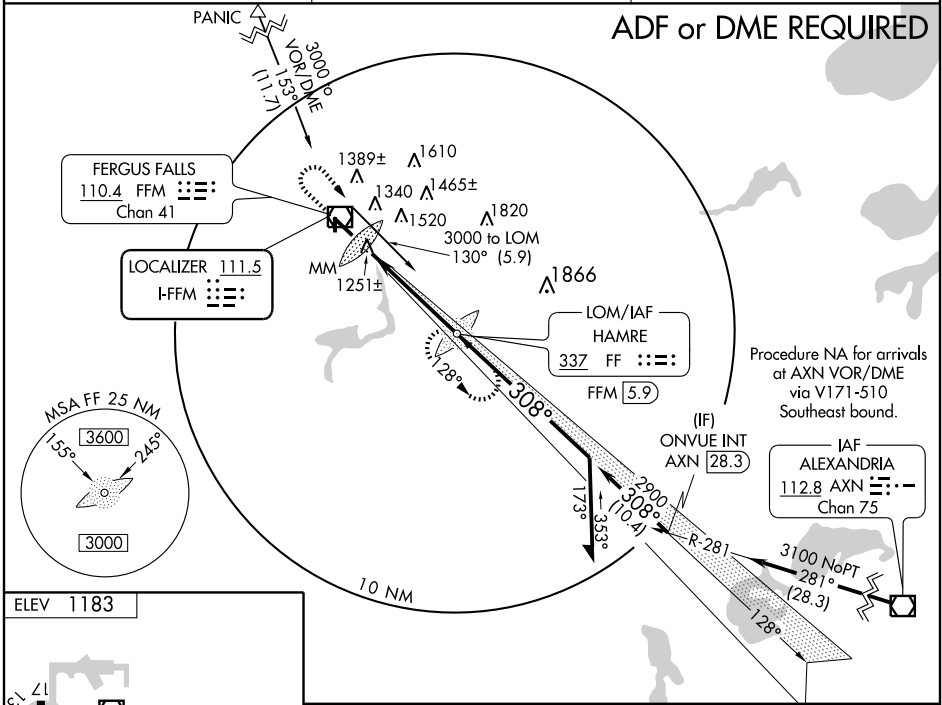
MALS
 MISSED APPROACH: Climb to 3000 then right turn direct HAMRE LOM/FFM 5.9 DME and hold.

AWOS-3
110.4

PRINCETON RADIO
122.35

UNICOM
122.8 (CTAF) 

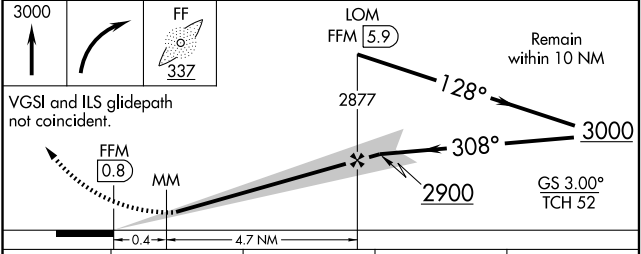
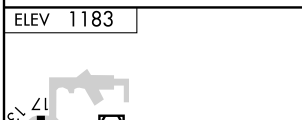
ADF or DME REQUIRED


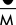


Procedure NA for arrivals at AXN VOR/DME via V171-510 Southeast bound.

NC-1, 22 OCT 2009 to 19 NOV 2009

NC-1, 22 OCT 2009 to 19 NOV 2009



REIL Rwy 13 and 35 
 MIRL Rwy 13-31 and 17-35 
 FAF to MAP 5.1 NM

Knots	60	90	120	150	180
Min:Sec	5:06	3:24	2:33	2:02	1:42

CATEGORY	A	B	C	D
S-ILS 31	1382-1/2 200 (200-1/2)			
S-LOC 31	1520-1/2 338 (400-1/2) 1520-3/4 338 (400-3/4)			
CIRCLING	1640-1 457 (500-1)	1740-1 557 (600-1)	1740-1 1/2 557 (600-1 1/2)	1880-2 1/4 697 (700-2 1/4)

ILS or LOC RWY 31