

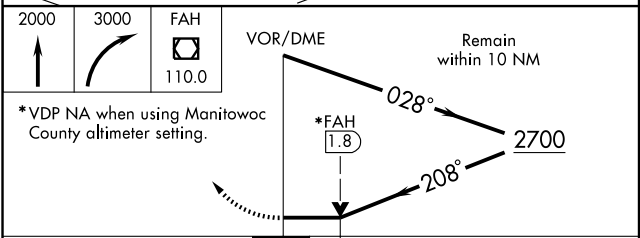
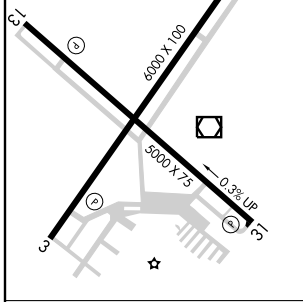
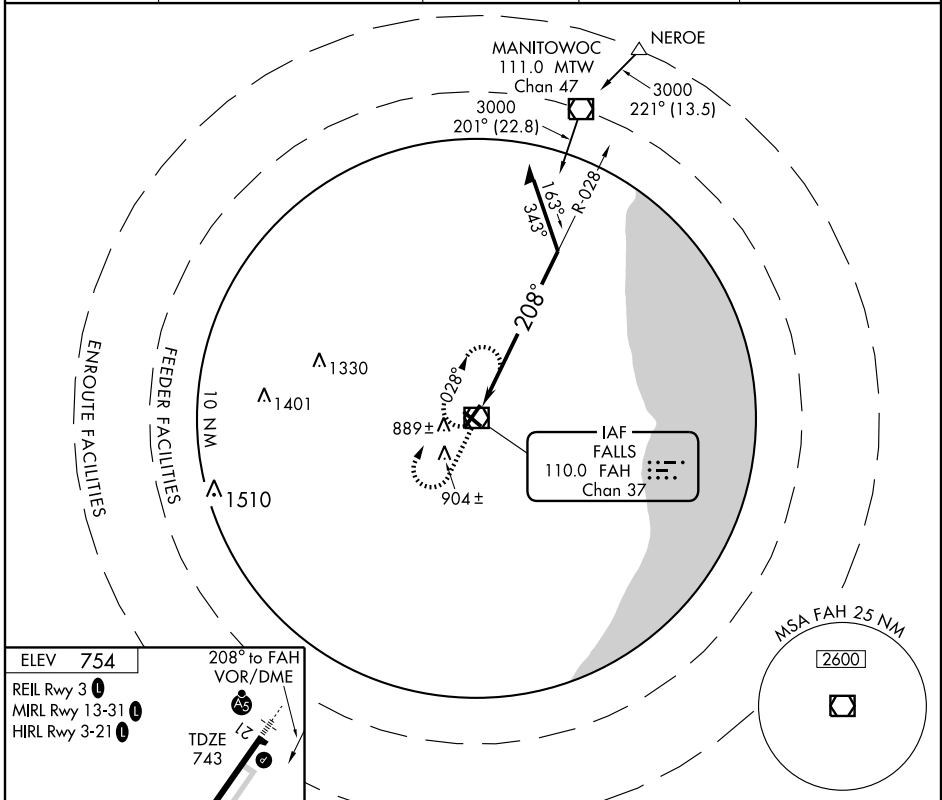
# VOR RWY 21

SHEBOYGAN COUNTY MEMORIAL (SBM)

VOR/DME FAH <b>110.0</b> Chan <b>37</b>	APP CRS <b>208°</b>	Rwy Idg TDZE <b>743</b> Apt Elev <b>754</b>	<b>6000</b>
---	------------------------	---	-------------

<p><b>▼</b> If local altimeter setting not received, use Manitowoc County altimeter setting and increase all MDAs 80 feet.</p> <p><b>▲</b> When VGSI inop, circling to Rwy 13-31 NA at night.</p>	<p><b>MALSR</b></p>	<p><b>MISSED APPROACH:</b> Climb to 2000 then climbing right turn to 3000 direct FAH VOR/DME and hold.</p>
---	---------------------	--

ASOS <b>110.0</b>	MILWAUKEE APP CON <b>127.0 263.075</b>	GCO <b>121.725</b>	CLNC DEL <b>127.375</b>	UNICOM <b>122.7 (CTAF)</b>
----------------------	---	-----------------------	----------------------------	-------------------------------



ELEV	754
REIL Rwy 3	①
MIRL Rwy 13-31	①
HIRL Rwy 3-21	①
Knots	60 90 120 150 180
Min:Sec	

CATEGORY	A	B	C	D
S-21	1200-1/2	457 (500-1/2)	1200-3/4	1200-1
			457 (500-3/4)	457 (500-1)
CIRCLING	1200-1	1220-1	1220-1 1/2	1320-2
	446 (500-1)	466 (500-1)	466 (500-1 1/2)	566 (600-2)

# VOR RWY 21

EC-3, 22 OCT 2009 to 19 NOV 2009

EC-3, 22 OCT 2009 to 19 NOV 2009