


ILS or LOC/DME RWY 21

SHEBOYGAN COUNTY MEMORIAL (SBM)

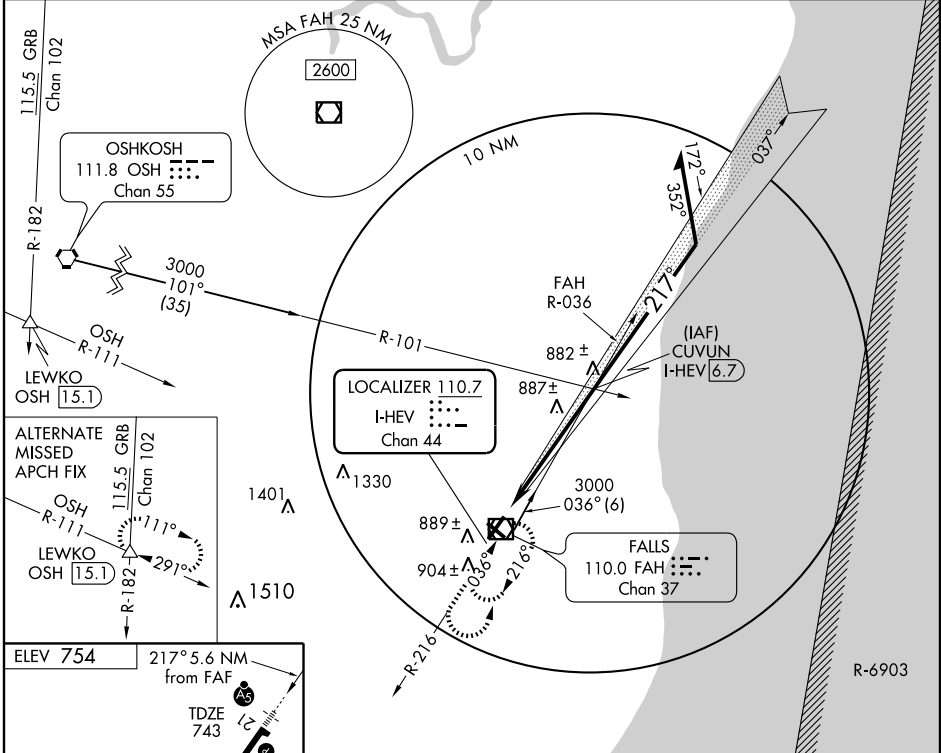
LOC/DME I-HEV 110.7 Chan 44	APP CRS 217°	Rwy Idg TDZE Apt Elev	6000 743 754
--	------------------------	-----------------------------	---

⚠ When VGSI inop, circling Rwy 13-31 NA at night. If local altimeter setting not received, use Manitowoc County altimeter setting and increase DA to 1010 feet and increase all MDAs 80 feet. VDP NA when using Manitowoc altimeter setting.

MALSR 

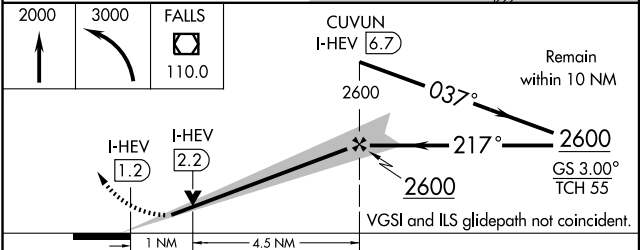
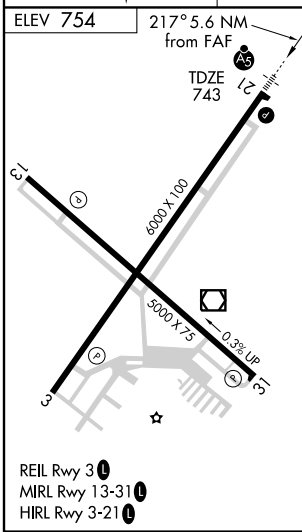
MISSED APPROACH: Climb to 2000 then climbing left turn to 3000 direct FALLS VOR/DME and hold.

ASOS 110.0	MILWAUKEE APP CON 127.0 263,075	GCO 121.725	CLNC DEL 127.375	UNICOM 122.7 (CTAF) 0
----------------------	---	-----------------------	----------------------------	--



EC-3, 22 OCT 2009 to 19 NOV 2009

EC-3, 22 OCT 2009 to 19 NOV 2009



CATEGORY	A	B	C	D
S-ILS 21	943-1/2 200 (200-1/2)			
S-LOC 21	1120-1/2 377 (400-1/2)		1120-3/4 377 (400-3/4)	
CIRCLING	1220-1 466 (500-1)	1220-1/2 466 (500-1/2)		1320-2 566 (600-2)