

DARLINGTON, SOUTH CAROLINA

AL-5375 (FAA)

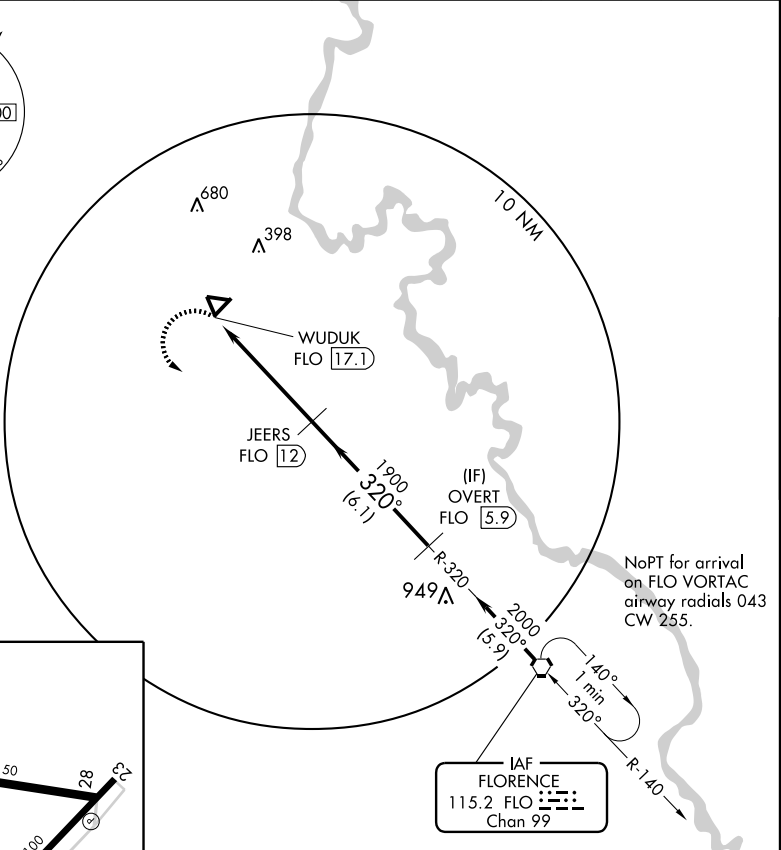
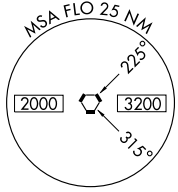
VOR/DME-A

DARLINGTON COUNTY JETPORT (UDG)

VORTAC FLO <b>115.2</b> Chan <b>99</b>	APP CRS <b>320°</b>	Rwy Idg TDZE Apt Elev	N/A N/A <b>192</b>
--	------------------------	-----------------------------	--------------------------

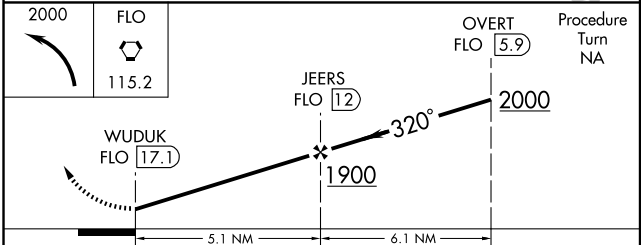
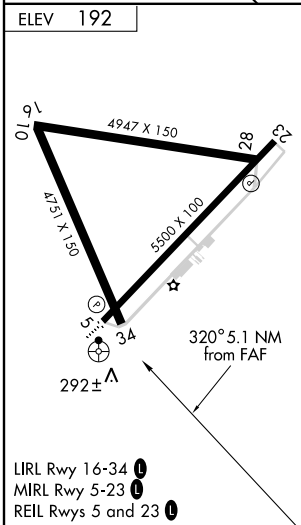
<p><b>▼</b> If local altimeter setting not received, use Florence altimeter setting and increase all MDAs 60 feet.</p> <p><b>▲</b></p>	<p>MISSED APPROACH: Climbing left turn to 2000 direct to FLO VORTAC and hold.</p>
--	---

AWOS-3 <b>119.925</b>	FLORENCE APP CON * <b>118.6 341.7</b>	CLNC DEL <b>118.55</b>	UNICOM <b>123.0</b> (CTAF) <b>0</b>
--------------------------	--	---------------------------	--



SE-2, 22 OCT 2009 to 19 NOV 2009

SE-2, 22 OCT 2009 to 19 NOV 2009



CATEGORY	A	B	C	D
CIRCLING	620-1 428 (500-1)	660-1 468 (500-1)	660-1½ 468 (500-1½)	760-2 568 (600-2)

DARLINGTON, SOUTH CAROLINA  
Amdt 7 08325

34°27'N - 79°53'W

DARLINGTON COUNTY JETPORT (UDG)  
VOR/DME-A

LIRL Rwy 16-34 **0**  
MIRL Rwy 5-23 **0**  
REIL Rwys 5 and 23 **0**