

RNAV (GPS) RWY 5

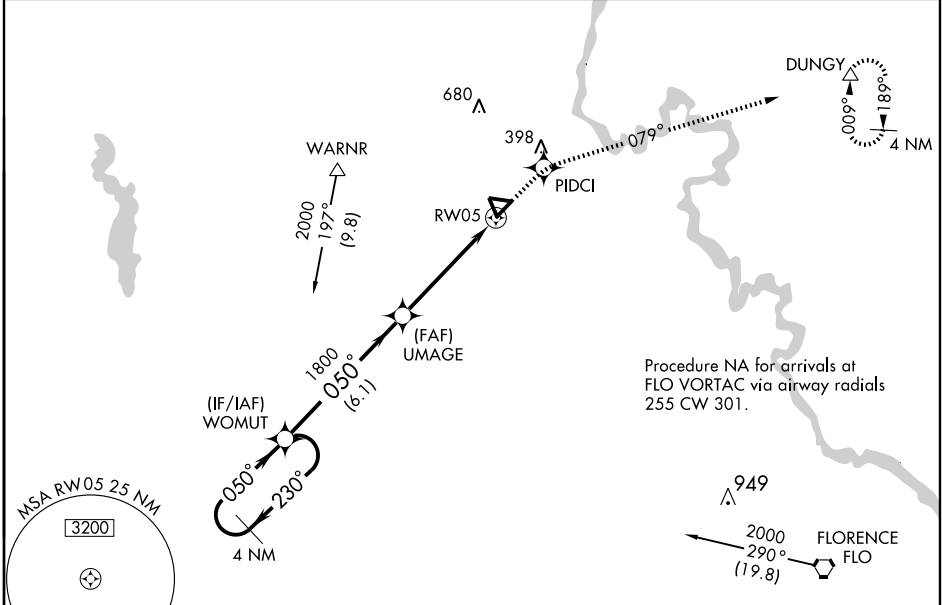
DARLINGTON COUNTY JETPORT (UDG)

WAAS CH 42704 W05A	APP CRS 050°	Rwy Idg TDZE Apt Elev	5500 189 192
--	------------------------	-----------------------------	---

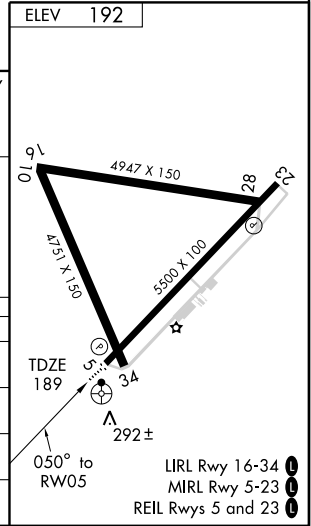
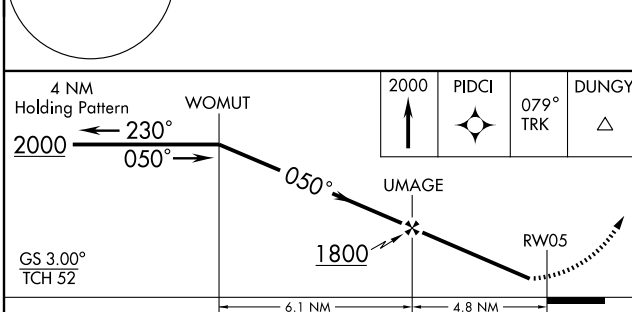
▼ If local altimeter setting not received, use Florence altimeter setting and increase LPV DA to 541 feet; LNAV/VNAV DA to 610 feet; increase all MDAs 60 feet. Baro-VNAV NA when using Florence altimeter setting. DME/DME RNP-0.3 NA. Inoperative table does not apply. For uncompensated Baro-VNAV systems, LNAV/VNAV NA below -15°C (5°F) or above 48°C (118°F). Visibility reduction by helicopters NA

▲ **ODALS** MISSED APPROACH: Climb to 2000 direct PIDCI and via 079° track to DUNGY and hold.

AWOS-3 119.925	FLORENCE APP CON * 118.6 341.7	CLNC DEL 118.55	UNICOM 123.0(CTAF) 0
--------------------------	--	---------------------------	--------------------------------



Procedure NA for arrivals at FLO VORTAC via airway radials 255 CW 301.



CATEGORY	A	B	C	D
LPV DA	493-1		304 (400-1)	
LNAV/VNAV DA	562-1¼		373 (400-1¼)	
LNAV MDA	560-1		371 (400-1)	
	620-1		560-1¼	
	428 (500-1)		371 (400-1¼)	
	660-1		560-1¼	
	468 (500-1)		371 (400-1¼)	
	660-1½		560-1¼	
	468 (500-1½)		371 (400-1¼)	
	660-1½		560-1¼	
	468 (500-1½)		371 (400-1¼)	
	760-2		560-1¼	
	568 (600-2)		371 (400-1¼)	

SE-2, 22 OCT 2009 to 19 NOV 2009

SE-2, 22 OCT 2009 to 19 NOV 2009