

WAAS CH 86904 W23A	APP CRS 230°	Rwy Idg 5500 TDZE 185 Apt Elev 192
--	------------------------	---

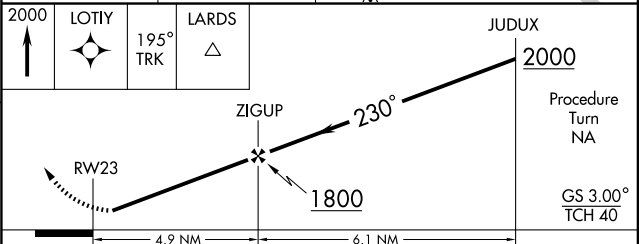
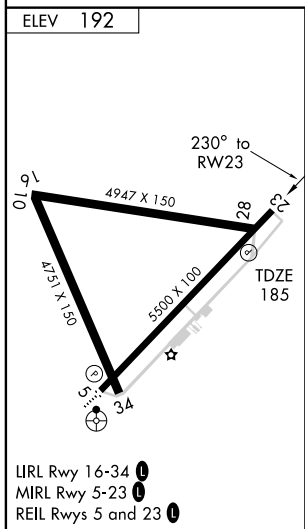
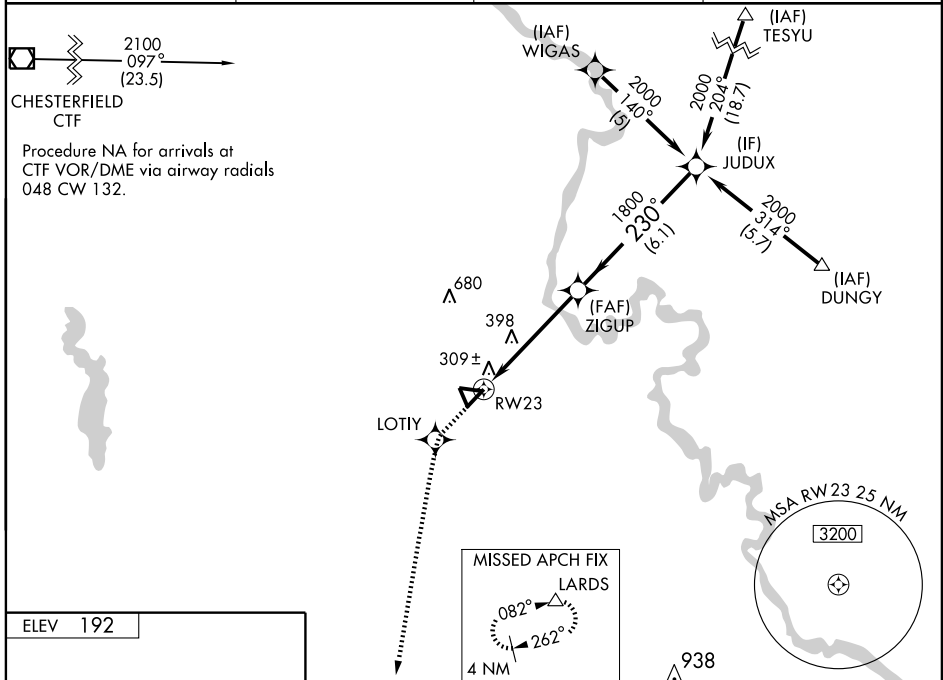
RNAV (GPS) RWY 23

DARLINGTON COUNTY JETPORT (UDG)

For uncompensated Baro-VNAV systems, LNAV/VNAV NA below -15°C (5°F) or above 48°C (118°F). If local altimeter setting not received, use Florence altimeter setting and increase LPV DA to 527 feet; LNAV/VNAV DA to 627 feet; increase all MDAs 60 feet. DME/DME RNP-0.3 NA. Visibility reduction by helicopters NA. Baro-VNAV NA when using Florence altimeter setting.

MISSED APPROACH: Climb to 2000 direct LOTIY and via 195° track to LARDS and hold.

AWOS-3 119.925	FLORENCE APP CON * 118.6 341.7	CLNC DEL 118.55	UNICOM 123.0 (CTAF) 0
--------------------------	--	---------------------------	---------------------------------



CATEGORY	A	B	C	D
LPV DA	479-1 294 (300-1)			
LNAV/VNAV DA	579-1½ 394 (400-1½)			
LNAV MDA	700-1	515 (600-1)	700-1½ 515 (600-1½)	700-1¾ 515 (600-1¾)
CIRCLING	700-1	508 (600-1)	700-1½ 508 (600-1½)	760-2 568 (600-2)

SE-2, 22 OCT 2009 to 19 NOV 2009

SE-2, 22 OCT 2009 to 19 NOV 2009