

DARLINGTON, SOUTH CAROLINA

AL-5375 (FAA)

# NDB RWY 23

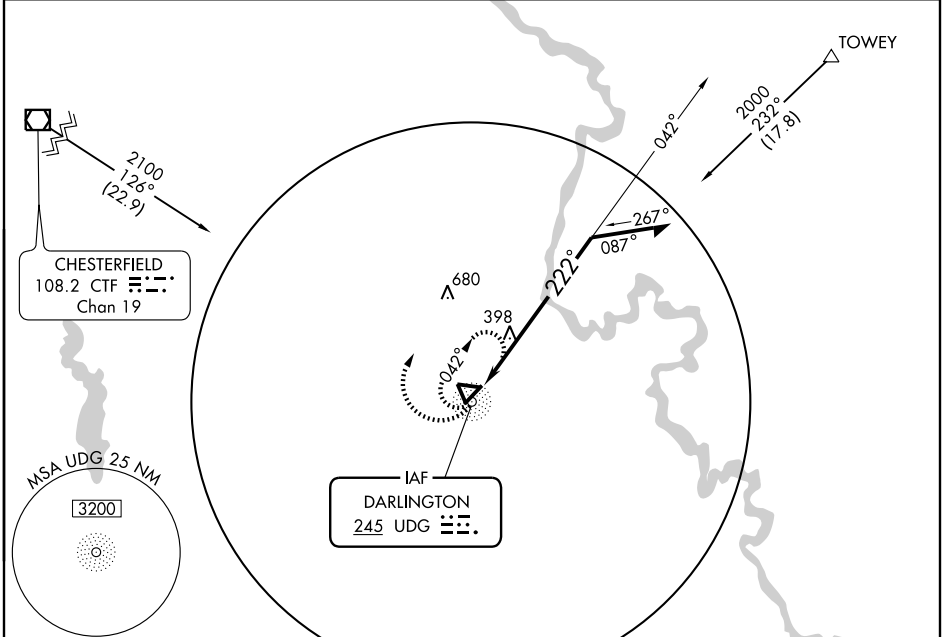
DARLINGTON COUNTY JETPORT (UDG)

NDB	UDG	APP CRS	Rwy Idg	5500
<b>245</b>		<b>222°</b>	TDZE	<b>185</b>
			Apt Elev	<b>192</b>

**⚠** If local altimeter setting not received, use Florence altimeter setting and increase all MDAs 60 feet.  
**⚠** NA Visibility reduction by helicopters NA.

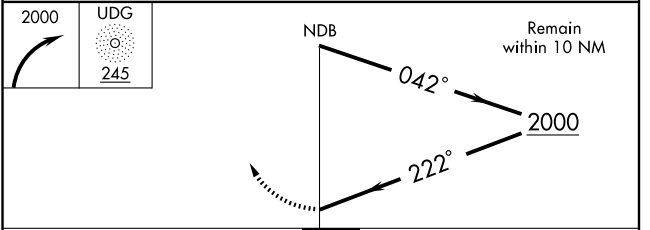
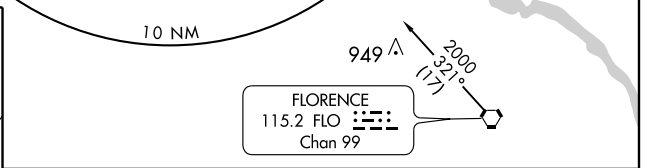
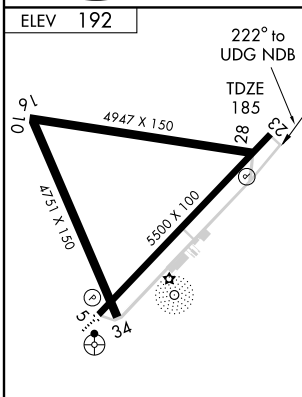
MISSED APPROACH: Climbing right turn to 2000 in UDG NDB holding pattern.

AWOS-3 <b>119.925</b>	FLORENCE APP CON ★ <b>118.6 341.7</b>	CLNC DEL <b>118.55</b>	UNICOM <b>123.0(CTAF) 0</b>
--------------------------	--	---------------------------	--------------------------------



SE-2, 22 OCT 2009 to 19 NOV 2009

SE-2, 22 OCT 2009 to 19 NOV 2009



CATEGORY	A	B	C	D
S-23	800-1	615 (700-1)	800-1 <sup>3</sup> / <sub>4</sub> 615 (700-1 <sup>3</sup> / <sub>4</sub> )	800-2 615 (700-2)
CIRCLING	800-1	608 (700-1)	800-1 <sup>3</sup> / <sub>4</sub> 608 (700-1 <sup>3</sup> / <sub>4</sub> )	800-2 608 (700-2)

DARLINGTON, SOUTH CAROLINA  
Amdt 1 08325

34°27'N - 79°53'W

DARLINGTON COUNTY JETPORT (UDG)  
**NDB RWY 23**