

RNAV (GPS) RWY 28

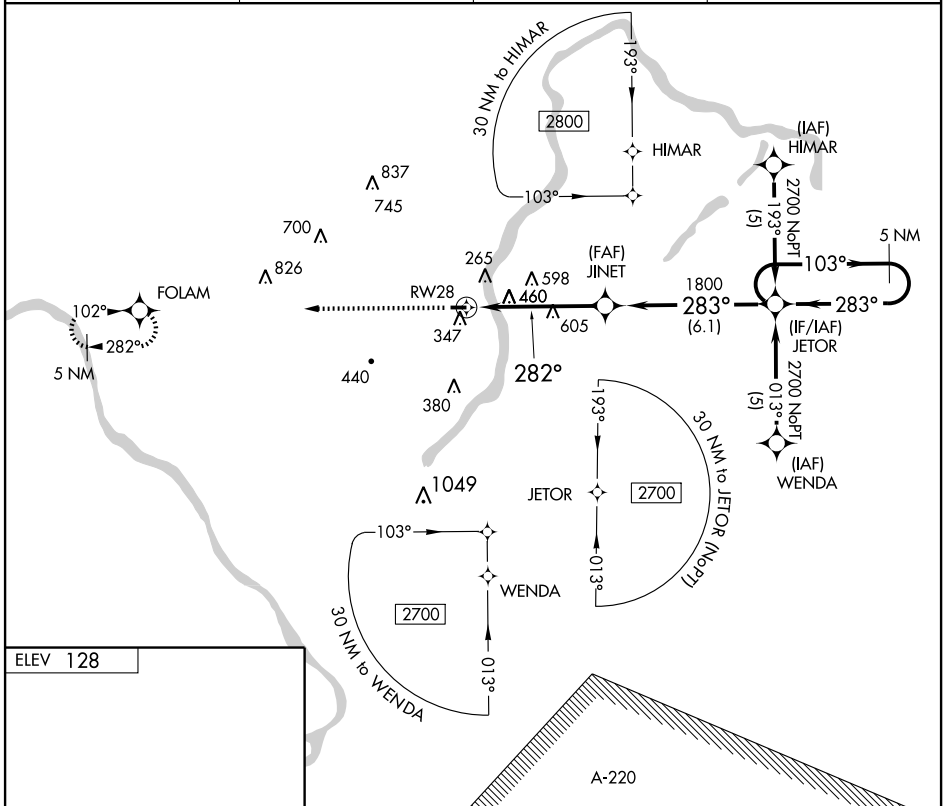
PRINCETON (39N)

APP CRS 282°	Rwy Idg TDZE Apt Elev	3130 128 128
------------------------	-----------------------------	---

▼ Use Trenton Mercer altimeter setting, if not received use Somerset altimeter setting. Procedure NA at night. Visibility reduction by helicopters NA. DME/DME RNP-0.3 NA.

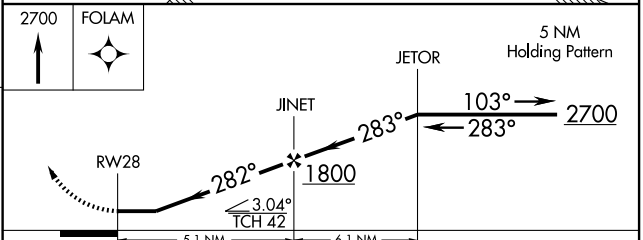
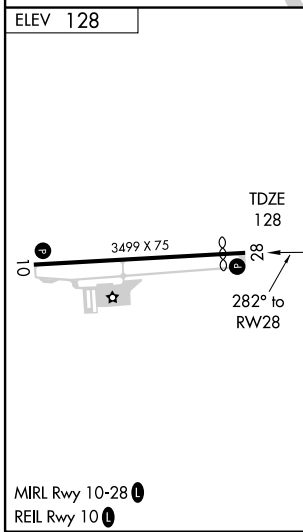
▲ NA MISSED APPROACH: Climb to 2700 direct FOLAM and hold.

TRENTON MERCER ASOS 126.77	NEW YORK APP CON 132.8 379.9	UNICOM 122.725 (CTAF)	123.05 0
--------------------------------------	--	---------------------------------	------------------------



NE-2, 22 OCT 2009 to 19 NOV 2009

NE-2, 22 OCT 2009 to 19 NOV 2009



CATEGORY	A	B	C	D
LNNAV MDA	900-1 772 (800-1)	900-1¼ 772 (800-1¼)	900-2¼ 772 (800-2¼)	NA
CIRCLING	900-1 772 (800-1)	900-1¼ 772 (800-1¼)	900-2¼ 772 (800-2¼)	NA