

RNAV (GPS) RWY 10

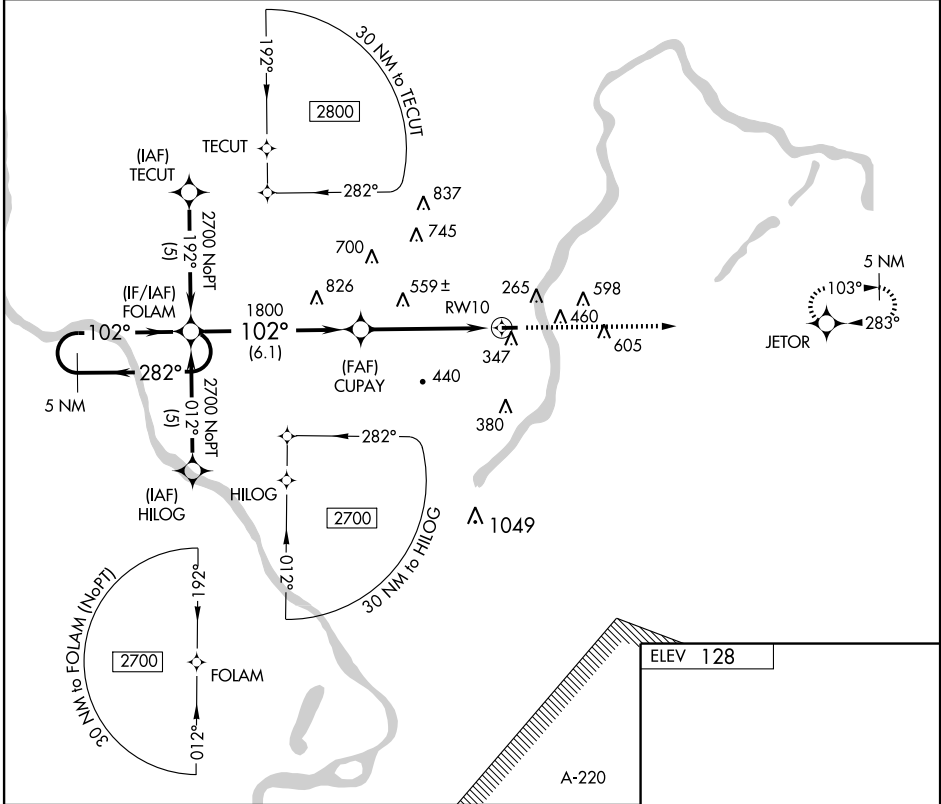
PRINCETON (39N)

APP CRS 102°	Rwy Idg TDZE Apt Elev	3499 125 128
------------------------	-----------------------------	---

▼ Use Trenton Mercer altimeter setting, if not received use Somerset altimeter setting. DME/DME RNP-0.3 NA.
▲ NA Circling to Rwy 28 NA at night.

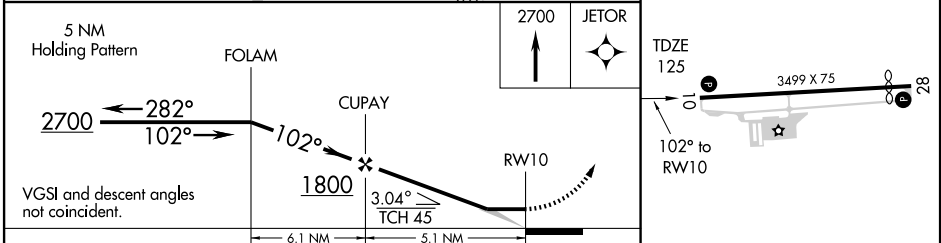
MISSED APPROACH: Climb to 2700 direct JETOR and hold.

TRENTON MERCER ASOS 126.77	NEW YORK APP CON 132.8 379.9	UNICOM 122.725 (CTAF)	123.05 0
--------------------------------------	--	---------------------------------	-----------------



NE-2, 22 OCT 2009 to 19 NOV 2009

NE-2, 22 OCT 2009 to 19 NOV 2009



CATEGORY	A	B	C	D
LNAV MDA	860-1	735 (800-1)	860-2 735 (800-2)	NA
CIRCLING	860-1	732 (800-1)	860-2 732 (800-2)	NA

5 NM Holding Pattern

2700 JETOR

TDZE 125

3499 X 75

102° to RWY 10

MIRL Rwy 10-28 0

REIL Rwy 10 0