

RNAV (GPS) RWY 23

SHELBY (SBX)

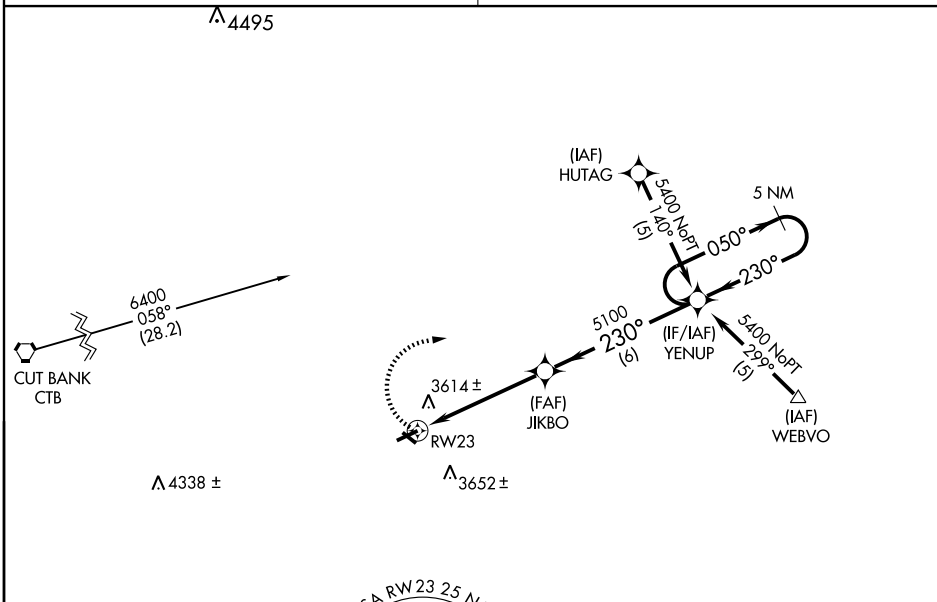
APP CRS 230°	Rwy Idg 5004
	TDZE 3443
	Apt Elev 3443

▽ DME/DME RNP- 0.3 NA.
Circling NA at night.
△ NA Visibility reduction by helicopters NA.
Use Cut Bank altimeter setting, if not received, use Great Falls altimeter setting and increase all MDAs 120 feet.

MISSED APPROACH: Climbing right turn to 5400 direct YENUP and hold.

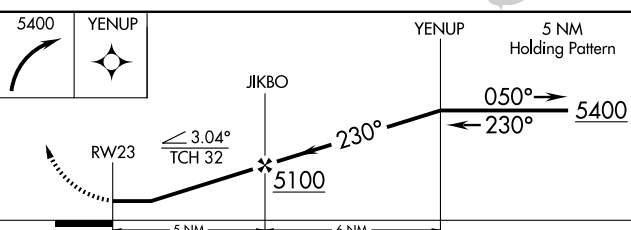
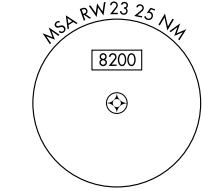
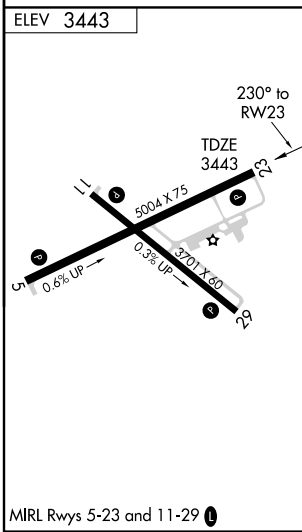
SALT LAKE CITY CENTER
133.4 285.4

UNICOM
122.8 (CTAF)



NW-1, 22 OCT 2009 to 19 NOV 2009

NW-1, 22 OCT 2009 to 19 NOV 2009



CATEGORY	A	B	C	D
RNAV MDA	4060-1	617 (700-1)	4060-1 ³ / ₄ 617 (700-1 ³ / ₄)	NA
CIRCLING	4120-1	677 (700-1)	4120-2 677 (700-2)	NA