

WAAS CH 93699 W18A	APP CRS 185°	Rwy Idg TDZE Apt Elev	6500 867 867
--	------------------------	-----------------------------	---

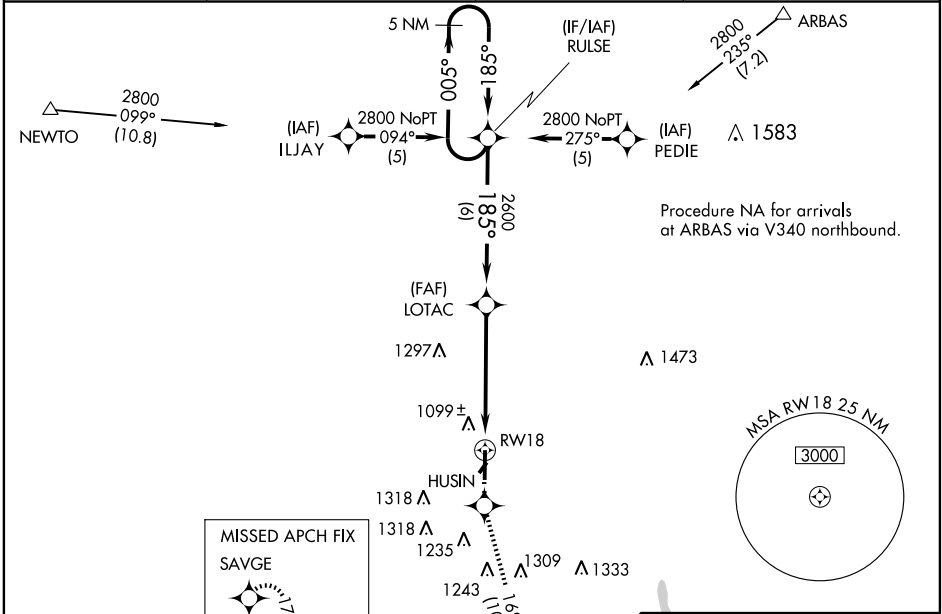
RNAV (GPS) RWY 18

CONNERSVILLE / METTEL FIELD (CEV)

NA DME/DME RNP-0.3 NA. For uncompensated Baro-VNAV systems, LNAV/VNAV NA below -16°C (4°F) or above 47°C (117°F). If local altimeter setting not received, use James M. Cox Dayton Intl, OH altimeter setting and increase all DAs/MDAs 140 feet. VDP and Baro-VNAV NA when using James M. Cox Dayton Intl, OH altimeter setting. For inoperative MALSR, increase LPV all Cats visibility to 3/4 mile.

MALSR MISSED APPROACH: Climb to 2600 direct HUSIN and via 169° track to SAVGE and hold.

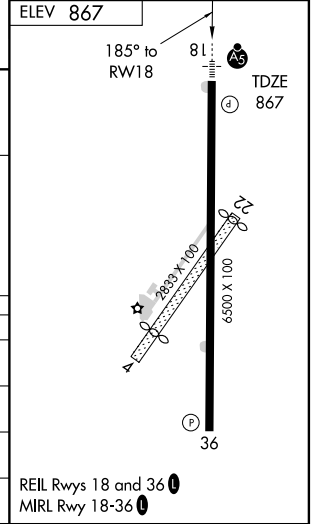
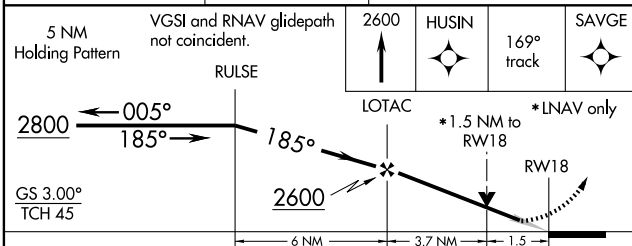
AWOS-3 118.325	DAYTON APP CON 134.45 352.05	GCO 121.725	UNICOM 122.8 (CTAF) U
--------------------------	--	-----------------------	--



EC-2, 22 OCT 2009 to 19 NOV 2009

EC-2, 22 OCT 2009 to 19 NOV 2009

5 NM Holding Pattern VGSI and RNAV glidepath not coincident. RULSE



CATEGORY	A	B	C	D
LPV DA	1117 - 1/2		250 (300-1/2)	
LNAV/VNAV DA	1427 - 1 1/2		560 (600-1 1/2)	
LNAV MDA	1360 - 1/2	493 (500-1/2)	1360 - 3/4 493 (500-3/4)	1360 - 1 493 (500-1)
CIRCLING	1440 - 2		573 (600-2)	

REIL Rwy 18 and 36 **U**
MIRL Rwy 18-36 **U**