

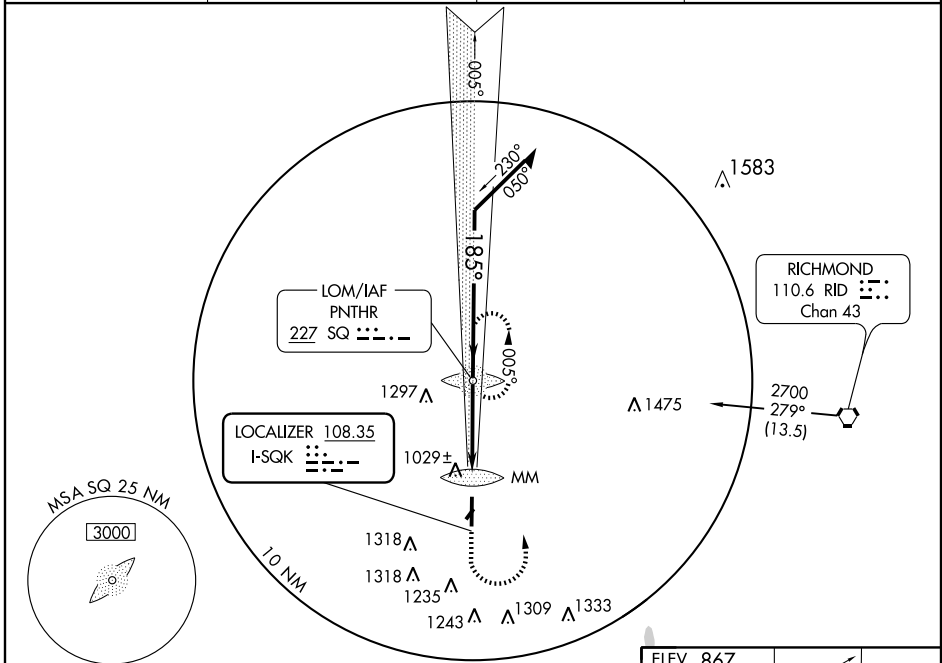
ILS RWY 18

CONNERSVILLE / METTEL FIELD (CEV)

LOC I-SQK 108.35	APP CRS 185°	Rwy Idg TDZE Apt Elev	6500 867 867
----------------------------	------------------------	-----------------------------	---

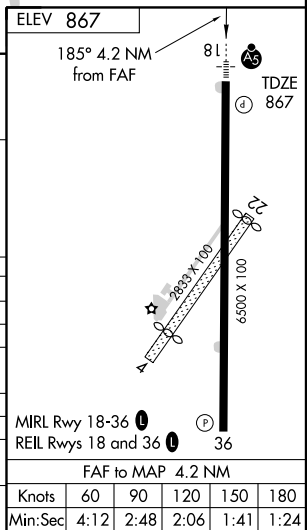
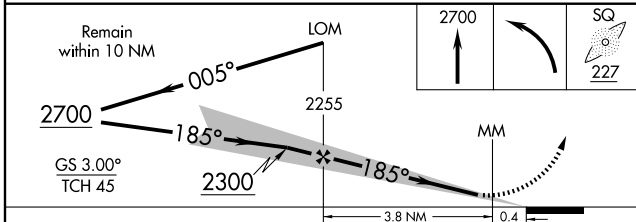
<p>▼ Obtain local altimeter setting on CTAF; when not received, use Dayton altimeter setting.</p> <p>▲ NA</p>	<p>MALSR</p>	<p>MISSED APPROACH: Climb to 2700, then left turn direct SQ LOM and hold.</p>
---	--------------	---

AWOS-3 118.325	DAYTON APP CON 134.45 352.05	GCO 121.725	UNICOM 122.8 (CTAF) 0
--------------------------	--	-----------------------	---------------------------------



EC-2, 22 OCT 2009 to 19 NOV 2009

EC-2, 22 OCT 2009 to 19 NOV 2009



CATEGORY	A	B	C	D
S-ILS 18		1067-½	200 (200-½)	
S-LOC 18	1280-½	413 (500-½)	1280-¾	413 (500-¾)
CIRCLING	1420-1	553 (600-1)	1440-1½	1680-2¾
			573 (600-1½)	813 (900-2¾)
DAYTON ALTIMETER SETTING MINIMUMS				
S-ILS 18		1188-½	321 (400-½)	
S-LOC 18	1400-½	533 (600-½)	1400-1	1400-1¼
			533 (600-1)	533 (600-1¼)
CIRCLING	1540-1	673 (700-1)	1560-2	1800-3
			693 (700-2)	933 (1000-3)

Knots	60	90	120	150	180
Min:Sec	4:12	2:48	2:06	1:41	1:24