

NDB or GPS RWY 24R

CLEVELAND / BURKE LAKEFRONT (BKL)

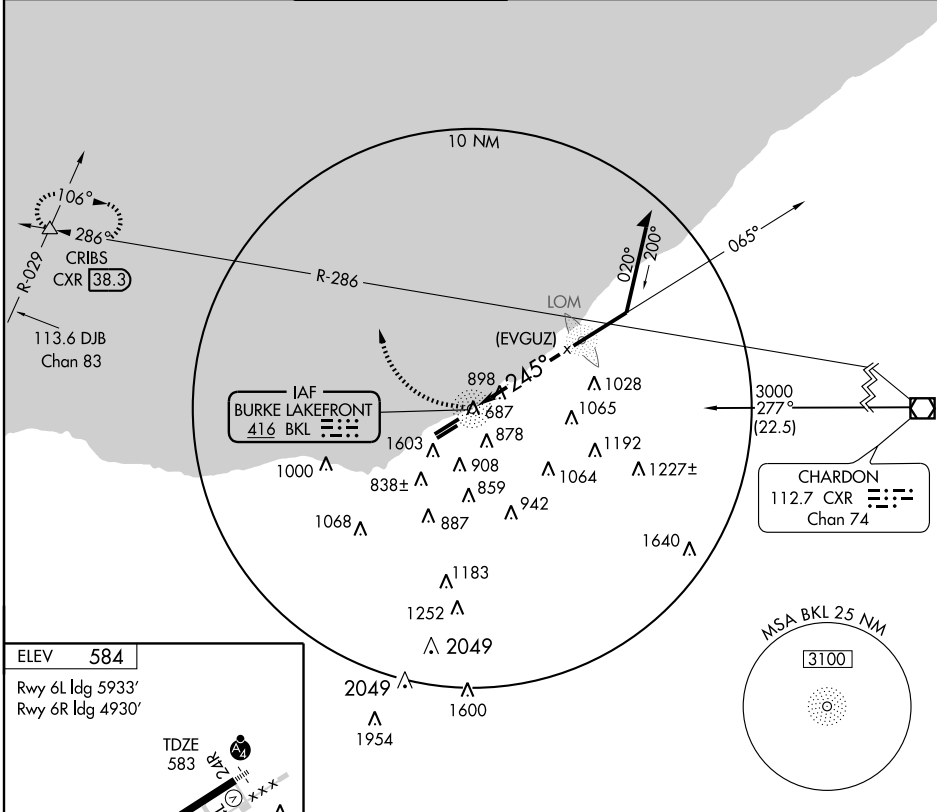
NDB BKL 416	APP CRS 245°	Rwy ldg TDZE Apt Elev	6198 583 584
-----------------------	------------------------	-----------------------------	---

▽ Circling NA southeast of Rwy 6R-24L.
△ Inoperative table does not apply.

MALSF

MISSED APPROACH: Climbing right turn to 2000 heading 350° to CXR R-286 then climb to 3000 via CXR R-286 to CRIBS Int and hold.

ATIS 125.25	CLEVELAND APP CON 125.35 354.025	LAKEFRONT TOWER ★ 124.3 (CTAF) 0 319.8	GND CON 121.9	CLNC DEL 121.9 (when tower closed)	UNICOM 122.95
-----------------------	--	--	-------------------------	--	-------------------------



EC-2, 22 OCT 2009 to 19 NOV 2009

EC-2, 22 OCT 2009 to 19 NOV 2009

ELEV 584

Rwy 6L ldg 5933'
Rwy 6R ldg 4930'

TDZE 583

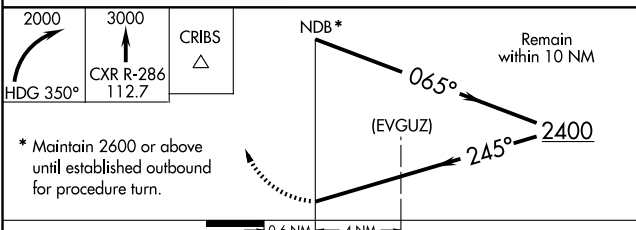
24R

6198 X 150
5197 X 100

TWR 649

REIL Rws 6L and 24L
HIRL Rws 6L-24R and 6R-24L

Knots	60	90	120	150	180
Min:Sec					



* Maintain 2600 or above until established outbound for procedure turn.

CATEGORY	A	B	C	D
S-24R	1400-1 817 (900-1)	1400-1¼ 817 (900-1¼)	1400-2½ 817 (900-2½)	1400-2¾ 817 (900-2¾)
CIRCLING	1400-1 817 (900-1)	1400-1¼ 817 (900-1¼)	1400-2½ 817 (900-2½)	1400-2¾ 817 (900-2¾)