

CLEVELAND, OHIO

AL-5370 (FAA)

ILS or LOC RWY 24R

CLEVELAND / BURKE LAKEFRONT (BKL)

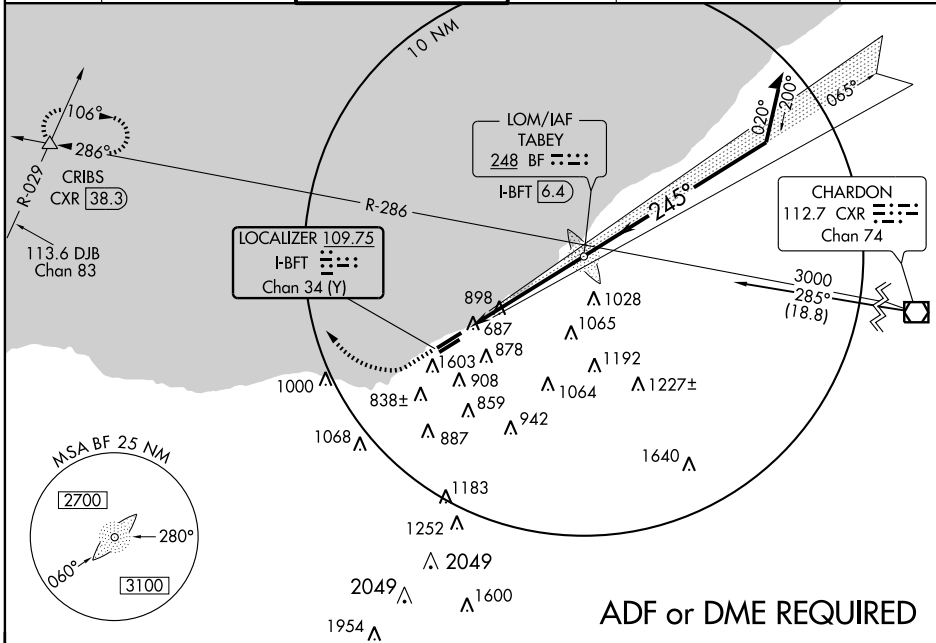
LOC/DME I-BFT 109.75 Chan 34 (Y)	APP CRS 245°	Rwy Idg TDZE Apt Elev	24R 6198 583 583	24L 5197 583 583
--	------------------------	-----------------------------	--	--

- ⚠ Circling not authorized SE of Rwy 6R-24L.
Inoperative table does not apply to S-LOC Cat C.
- ⚠ S-ILS minimums not authorized when control tower closed.



MISSED APPROACH: Climb to 1000, then climbing right turn to 2000 heading 350°, intercept CXR R-286 then climb to 3000 via CXR R-286 to CRIBS Int and hold.

ATIS 125.25	CLEVELAND APP CON 125.35 354.025	LAKEFRONT TOWER ★ 124.3 (CTAF) 0 319.8	GND CON 121.9	CLNC DEL 121.9 (when tower closed)	UNICOM 122.95
-----------------------	--	--	-------------------------	--	-------------------------



EC-2, 22 OCT 2009 to 19 NOV 2009

EC-2, 22 OCT 2009 to 19 NOV 2009

ELEV 583

Rwy 6L Idg 5933'
Rwy 6R Idg 4930'

245° 5.3 NM from FAF

TDZE 583

6198 X 150
5197 X 100

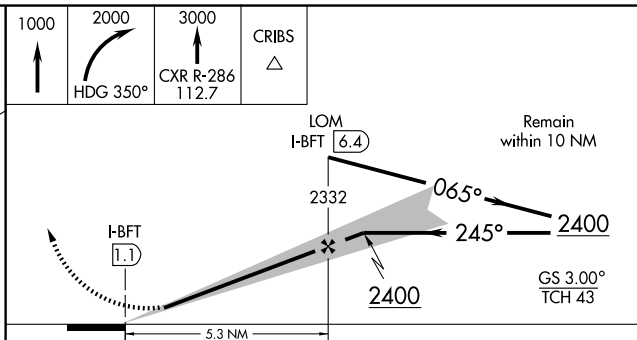
741
743
917
1209

TWR 649

REIL Rws 6L and 24L
HIRL Rws 6L-24R and 6R-24L

FAF to MAP 5.3 NM

Knots	60	90	120	150	180
Min:Sec	5:18	3:32	2:39	2:07	1:46



CATEGORY	A	B	C	D
S-ILS 24R	856-1 273 (300-1)			
S-LOC 24R	1160-3/4	577 (600-3/4)	1160-1 1/2 577 (600-1 1/2)	1160-1 3/4 577 (600-1 3/4)
SIDESTEP 24L	1160-1	577 (600-1)	1160-1 1/2 577 (600-1 1/2)	1160-2 577 (600-2)
CIRCLING	1160-1	577 (600-1)	1160-1 1/2 577 (600-1 1/2)	1160-2 577 (600-2)

CLEVELAND, OHIO

Orig-D 07130

CLEVELAND / BURKE LAKEFRONT (BKL)

41°31'N · 81°41'W

ILS or LOC RWY 24R