

AMRST TWO DEPARTURE

EC-2, 22 OCT 2009 to 19 NOV 2009

ATIS DEP
125.25
CLEVELAND DEP CON
125.35 346.325



DEPARTURE ROUTE DESCRIPTION

TAKE-OFF RUNWAYS 6L, 6R: Climb via heading 065° to 1800 then via assigned heading to 3000 thence

TAKE-OFF RUNWAYS 24R, 24L: Climbing right turn via CXR VOR/DME R-272 to 1900 then via assigned heading to 3000 thence

NOTE: RADAR REQUIRED

. . . . or assigned altitude for vectors to intercept the DJB VOR/DME R-265 to AMRST INT then via (Transition). Expect filed altitude/flight level ten (10) minutes after departure.

CARLETON TRANSITION (AMRST2_CRL): From over AMRST INT via CRL R-159 to CRL VORTAC.

WATERVILLE TRANSITION (AMRST2_VWV): From over AMRST INT via VWV R-115 to VWV VOR/DME.

CARLETON 115.7 CRL Chen 104
N42°02.88'-W83°27.46'
L-28, H-10

WATERVILLE 113.1 VWV Chen 78
N41°27.09' W83°38.32'
L-28, H-10

SANDUSKY 109.2 SKY Chen 29

DRYER 113.6 DJB Chen 83
N41°21.48' W82°09.72'
L-30, H-10

CHARDON 112.7 CXR Chen 74

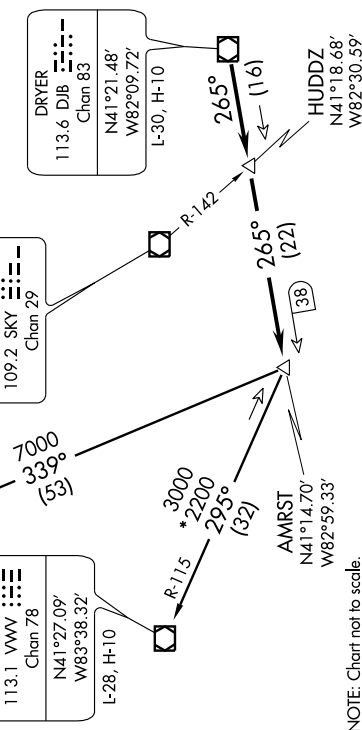
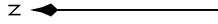
TAKE-OFF MINIMUMS:

Rwy 6L, 400-2 or STANDARD with minimum climb of 400 feet per NM to 1800'.

Rwy 6R, 400-2 or STANDARD with minimum climb of 360 feet per NM to 1800'.

Rwy 24L, 300-1½ or STANDARD with minimum climb of 527 feet per NM to 1900'.

Rwy 24R, 200-1 or STANDARD with minimum climb of 527 feet per NM to 1900'.



NOTE: Chart not to scale.

(NOTES CONTINUED ON FOLLOWING PAGE)

AMRST TWO DEPARTURE

EC-2, 22 OCT 2009 to 19 NOV 2009