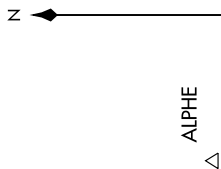


ALPHE TWO DEPARTURE (RNAV)

6000 22 OCT 2009 to 19 NOV 2009

ATIS
125.25
CLEVELAND DEP CON
125.35 346.32



DEPARTURE ROUTE DESCRIPTION

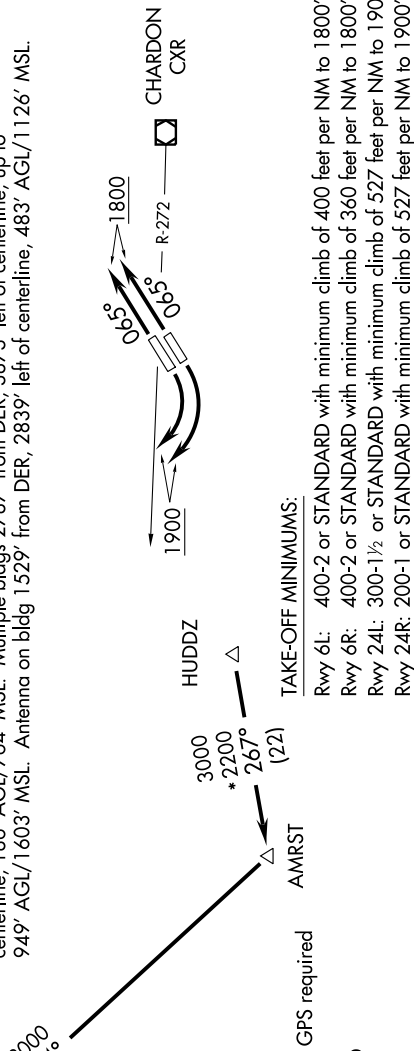
TAKE-OFF RUNWAYS 6L, 6R: Climb via heading 065° to 1800 then via assigned heading to 3000 thence. . . .

TAKE-OFF RUNWAYS 24R, 24L: Climbing right turn via CXR VOR/DME R-272 to 1900 then via assigned heading to 3000 thence. . . .

. . . or assigned altitude for radar vectors to HUDDZ, then via 267° track to AMRST, then via 324° track to ALPHE. Expect filed altitude/flight level ten (10) minutes after departure.

TAKE-OFF OBSTACLES:

- Rwy 6L: OL on Hanger, 1127' from DER, 780' right of centerline, 575' AGL/622' MSL. Tower 5589' from DER, 1760' right of centerline, 237' AGL/857' MSL. Stacks 1.6 NM from DER, 883' right of centerline, 312' AGL/898' MSL.
- Rwy 6R: OL on WSK 166' from DER, 241' left of centerline, 21' AGL/590' MSL. Stacks 1.8 NM from DER, 381' right of centerline, 312' AGL/898' MSL. Tower 5676' from DER, 1999' right of centerline, 108' AGL/734' MSL. Tower 1.1 NM from DER, 1258' right of centerline, 237' AGL/857' MSL.
- Rwy 24L: Monument 1257' from DER, 10' left of centerline, 55' AGL/630' MSL. Bridge 1.1 NM from DER, 2006' left of centerline, 208' AGL/792' MSL. Antenna 227' from DER, 505' left of centerline, 37' AGL/608' MSL. Antenna on building 1529' from DER, 2340' left of centerline, 483' AGL/1126' MSL. Building 2805' from DER, 3340' left of centerline, 949' AGL/1603' MSL.
- Rwy 24R: Crane 2228' from DER, 296' left of centerline, 136' AGL/707' MSL. Antenna 2783' from DER, 1155' left of centerline, 186' AGL/764' MSL. Multiple bldgs 2787' from DER, 3873' left of centerline, up to 949' AGL/1603' MSL. Antenna on bldg 1529' from DER, 2839' left of centerline, 483' AGL/1126' MSL.



TAKE-OFF MINIMUMS:

- Rwy 6L: 400-2 or STANDARD with minimum climb of 400 feet per NM to 1800'.
- Rwy 6R: 400-2 or STANDARD with minimum climb of 360 feet per NM to 1800'.
- Rwy 24L: 300-1/2 or STANDARD with minimum climb of 527 feet per NM to 1900'.
- Rwy 24R: 200-1 or STANDARD with minimum climb of 527 feet per NM to 1900'.

NOTE: DME/DME/IRU or GPS required
 NOTE: RNAV 1
 NOTE: RADAR REQUIRED

NOTE: Chart not to scale.

ALPHE TWO DEPARTURE (RNAV)

EC-2, 22 OCT 2009 to 19 NOV 2009